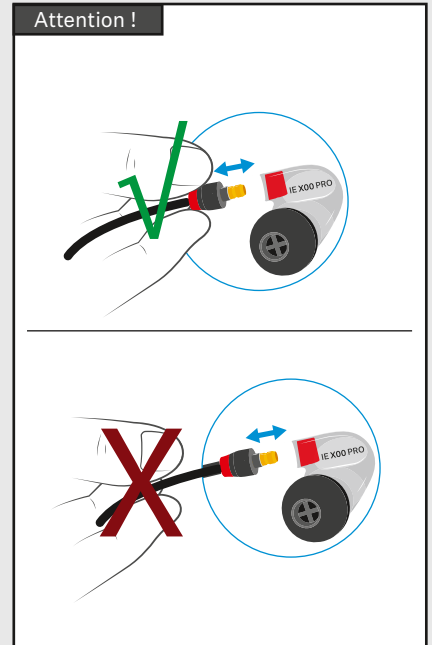
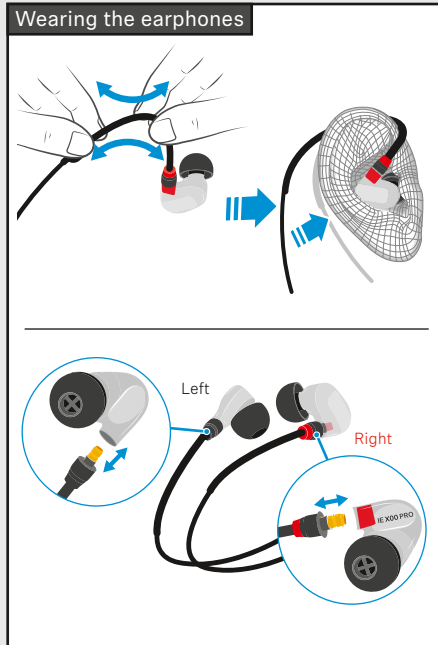
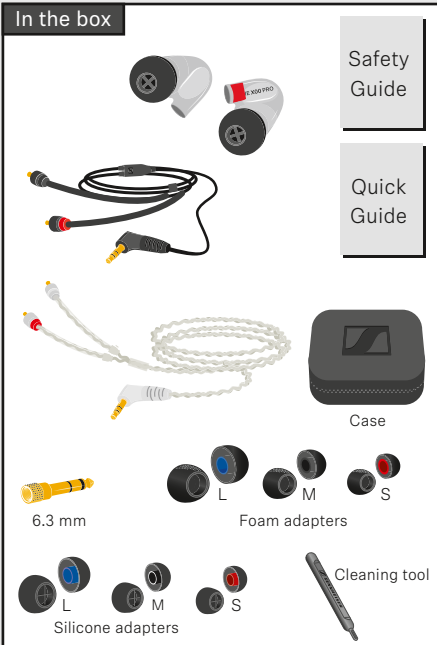




IE 400 PRO

IE 500 PRO

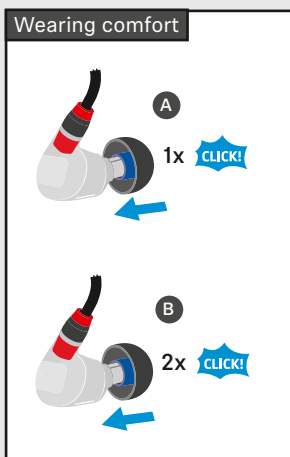
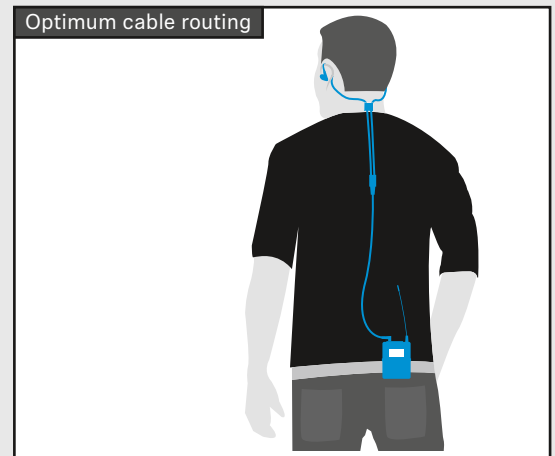
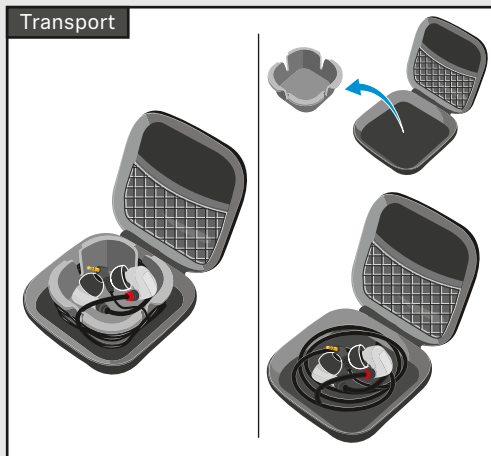
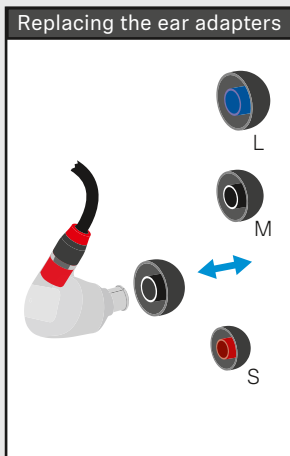
Quick Guide | Kurzanleitung | Guide rapide | Guida rapida | Guía de inicio rápido | Guia rápido | Beknopte handleiding | Krótka instrukcja obsługi | Snabbguide | Kort vejledning | Pikaohje | Γρήγορος οδηγός | Kisa Kilavuz | Краткая инструкция | 快速指南 | 快速使用指南 | クイックガイド | 요약 설명서



Sennheiser electronic GmbH & Co. KG

SENNHEISER

Am Labor 1, 30900 Wedemark, Germany, www.sennheiser.com
Printed in Germany, Publ. 11/19, 578646/A03



Specifications

	IE 400 PRO	IE 500 PRO
Frequency response	6 Hz - 19 kHz	6 Hz - 20 kHz
Impedance	16 Ω	
Sound pressure level (1 kHz/1 V _{rms})	123 dB	126 dB
THD (1 kHz, 94 dB)	< 0.08 %	
Noise attenuation	up to 26 dB	
Magnetized field strength	2 mT	
Operating temperature	-5 °C to +50 °C	
Storage temperature	-20 °C to +70 °C	
Relative air humidity	< 95 %	