

INSTALLATION - RK100PK (BLACK), RK100PKW (WHITE)

The RK100PK and RK100PKW preamp comes assembled for use with microphones using a miniature 4-pin connector. To wire a microphone cable directly to the preamp, follow these instructions:

1. Turn screw (A) counter-clockwise until it recedes below the case.
2. Remove the cap (C) by removing the set screw (B) with the provided hex wrench (.05 in.).

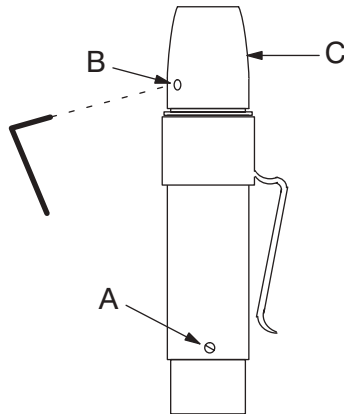


FIGURE 1

3. Push the circuit board out from the case interior to expose the black and red wires (D).
4. Unsolder the wires from the circuit board (E).

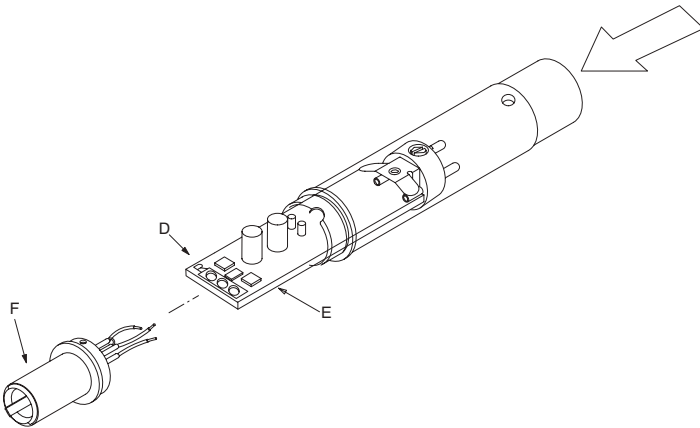


FIGURE 2

5. Insert the rubber flex relief (G) into the cap (C) and feed through the microphone cabling.

Note: You will need to reuse the rubber flex relief from your old preamp. If the rubber flex relief is unavailable, please contact the Shure Service Department.

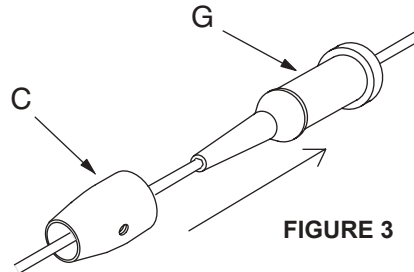


FIGURE 3

6. Solder the wires directly back onto the circuit board. Match wires as marked on the circuit board using the following key:

R = RED
B = BLACK
S = (GROUND) SHIELD

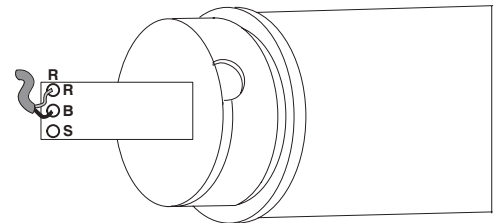


FIGURE 4

7. Push the circuit board back into the case, making sure that the set screw (A) is lined up with the screw hole in the side of the case (if the circuit board does not go in all the way, twist it slightly until the screw and hole are aligned). Raise the set screw (A) by turning clockwise so that the preamplifier is held securely in place. Screw on the cap (C). Do not use the set screw with the cap.

PIN-OUT FOR SHURE BODYPACK TRANSMITTERS AND PREAMPS

Product Model	Wiring
<ul style="list-style-type: none">Wireless bodypack transmitters - all models with TA4M connectorsMX1BP Battery/Phantom PreamplifierRK183PK Microflex Preamplifier (see below for RF Resistant RK100PK preamp model)RPM626 BETA Preamplifier	Pin 1: Shield Pin 2: Bias (+5Vdc) Pin 3: Audio Pin 4: Bias return - 20 k Ohm resistor to ground or equivalent active bias management circuit (jumpered to pin 3 when used with most condenser microphones)
<ul style="list-style-type: none">RK100PK Wired Preamplifier	Connector Body: Shield Pin 1: Unused Pin 2: Bias (+5Vdc) Pin 3: Audio Pin 4: Bias return - active bias management circuit (jumpered to pin 3 when used with most condenser microphones)



The pictorial shows the pin layout of a TA4F connector, as viewed from the wiring side. If you use a bright light and look at the female connector (TA4F) used for the cable, you will see numbers next to each hole.

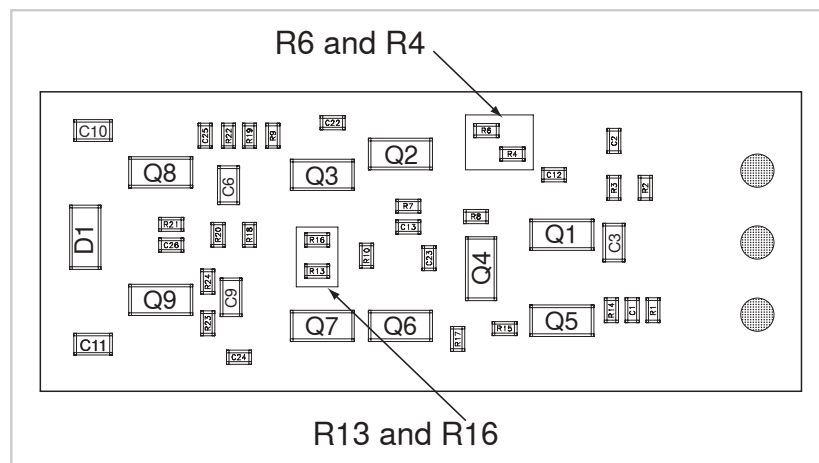
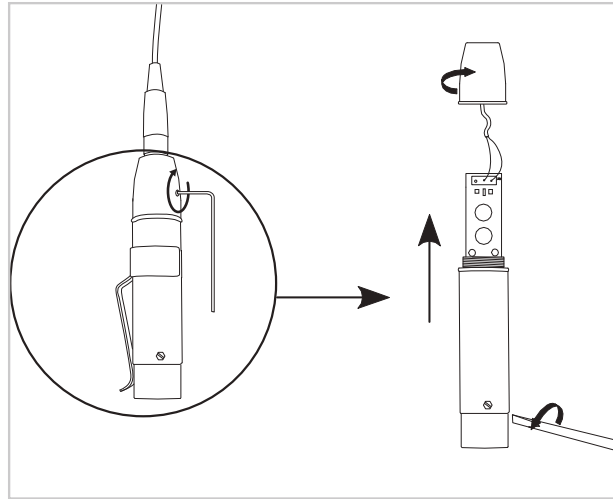
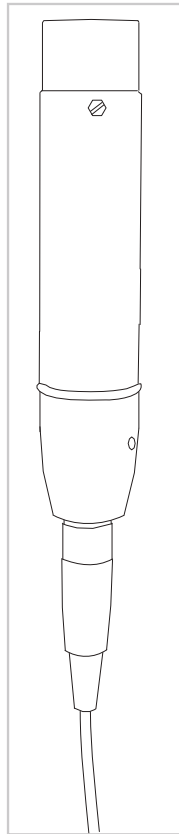
Applications:

Condenser Microphones - Shure WH30, PG30, WL18x, WL50, WL51, WL93, etc.

- Connect audio lead (black) to pins 3 and 4
- Connect bias lead (red) to pin 2
- Connect shield to pin 1 and connector body (use cable clamp insert piece as the connector body terminal)

Preamp Gain

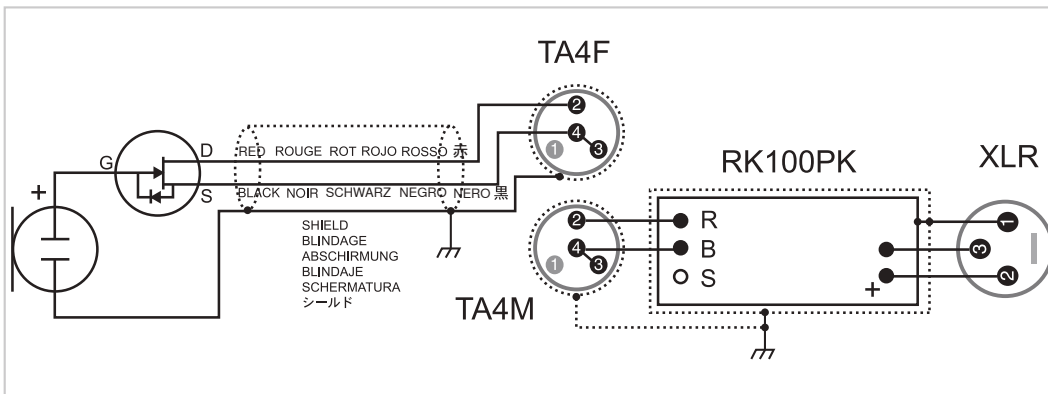
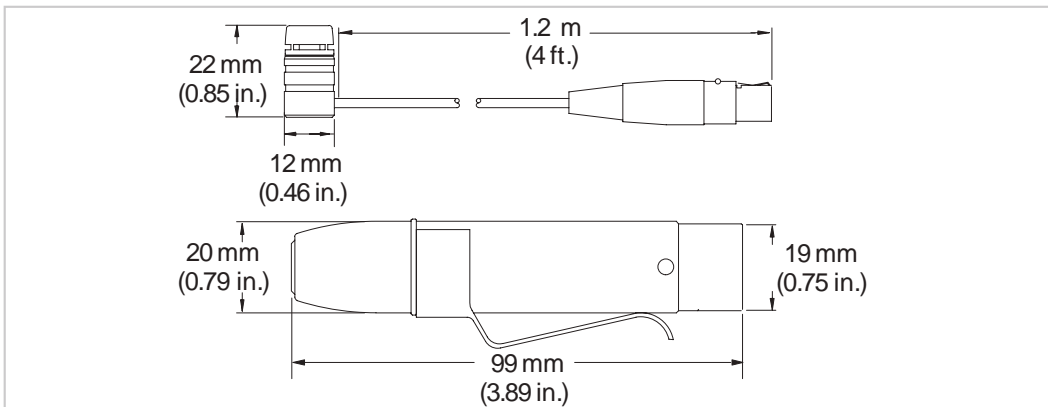
If necessary, the preamplifier gain can be reduced by 12 dB. Contact an authorized Shure service center for information.



GAIN SETTING		
	12 dB	0 dB
R6	10k	0 Ω
R4	10k	20k
R16	0 Ω	10M
R13	DNP	301 Ω

RFI Filtering

Important: Microphones must be used with the RK100PK preamp to optimize RF immunity.



SHURE®

SHURE Incorporated <http://www.shure.com>
 United States, Canada, Latin America, Caribbean:
 5800 W. Touhy Avenue, Niles, IL 60714-4608, U.S.A.
 Phone: 847-600-2000 U.S. Fax: 847-600-1212 Int'l Fax: 847-600-6446
 Europe, Middle East, Africa:
 Shure Europe GmbH, Phone: 49-7131-72140 Fax: 49-7131-721414
 Asia, Pacific:
 Shure Asia Limited, Phone: 852-2893-4290 Fax: 852-2893-4055