

Shure SLX Wireless



SLX sans fil de Shure
Sistema inalámbrico Shure SLX
Shure SLX Sem Fio



Quick Setup

Mise en service rapide

Schnelles Einrichten

Preparación Rápida

Installazione rapida

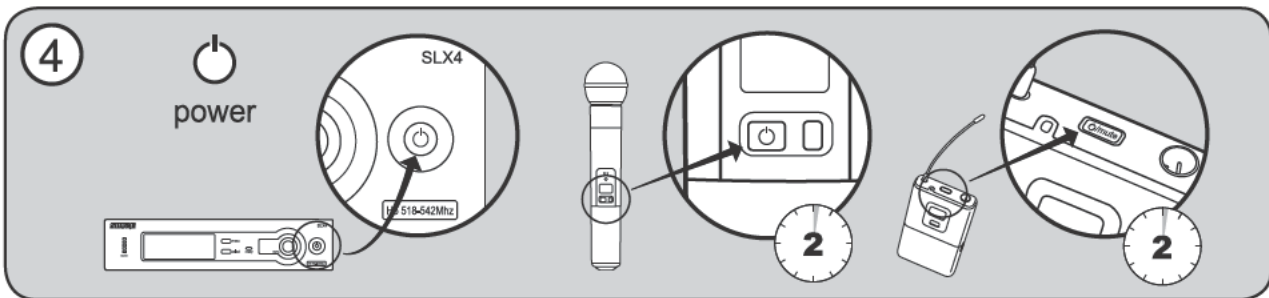
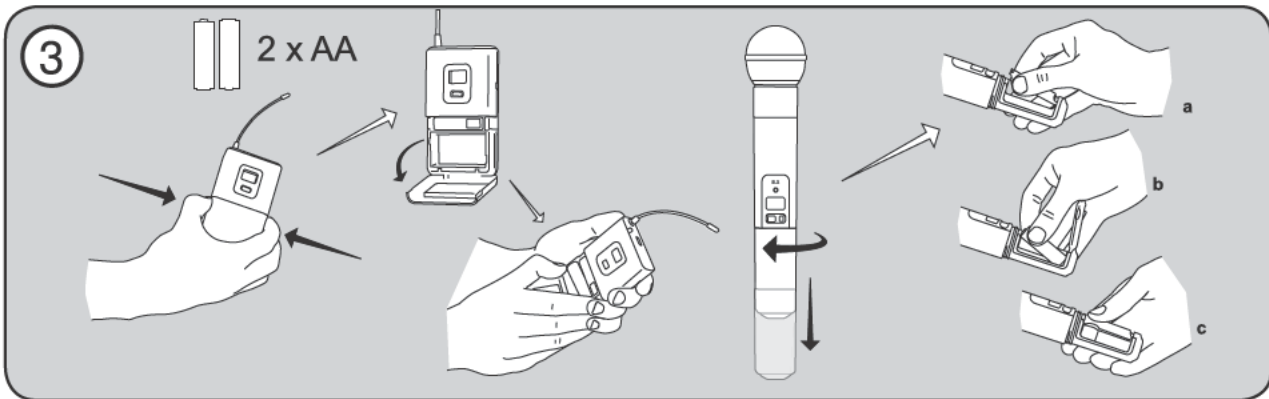
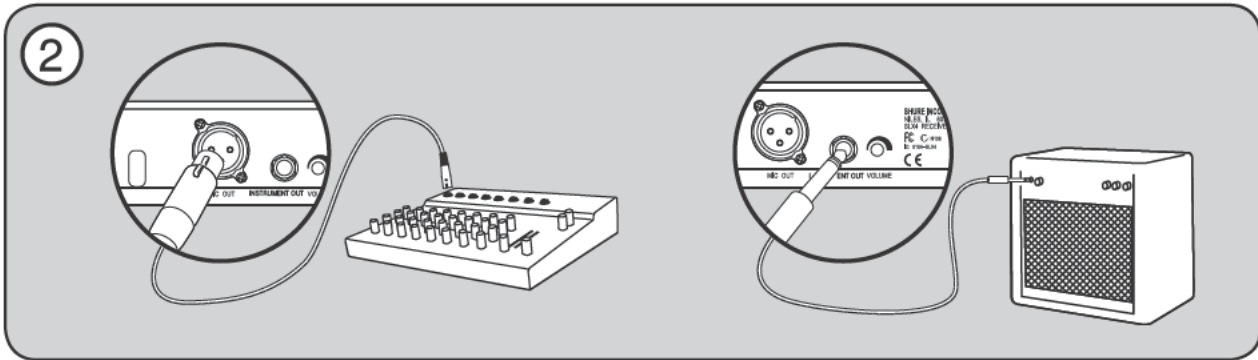
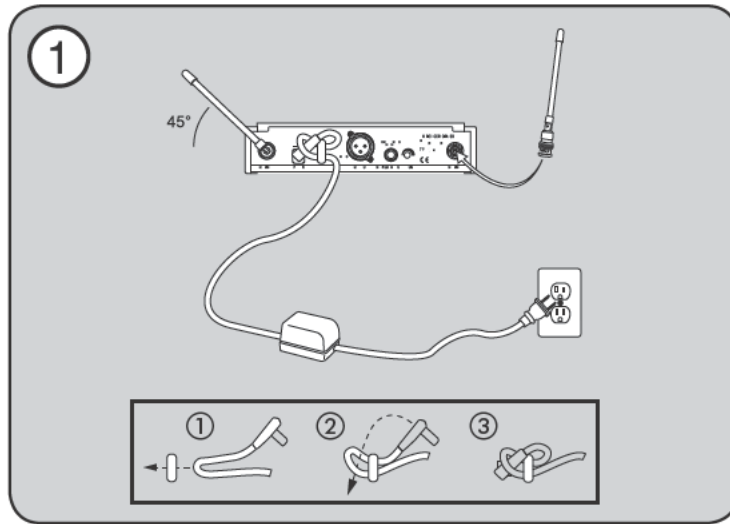
Montagem Rápida

Быстрая настройка

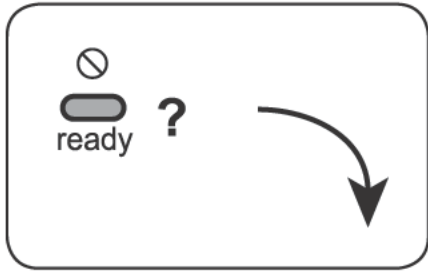
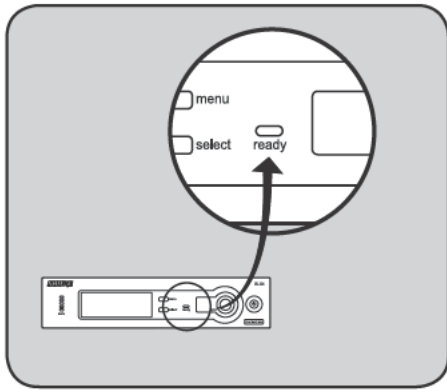
クイックセットアップ

빠른 설정

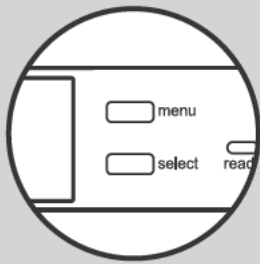
快速设置指南



5



a Automatic Frequency Selection

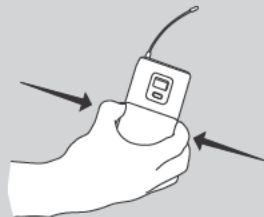
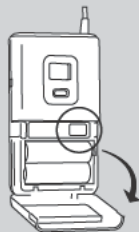
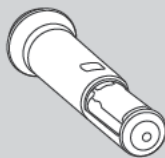
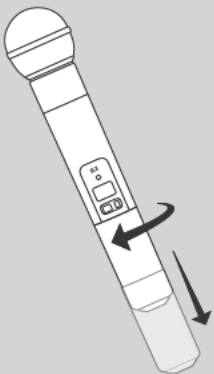


1 x
1 x

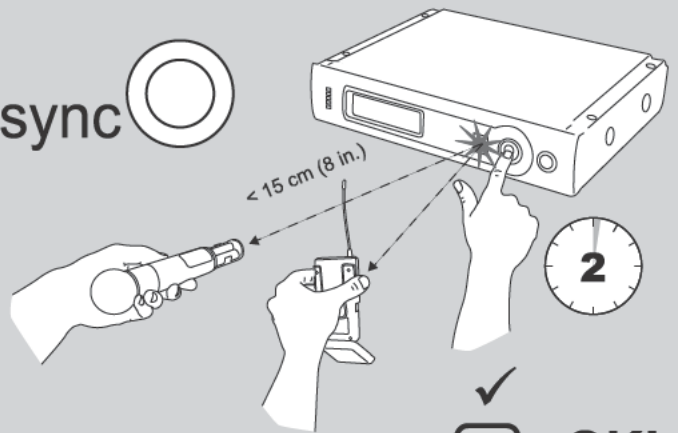


AUTO CHANNEL SELECT

b Automatic Transmitter Setup



sync 



ready **OK!**

Shure SLX Wireless

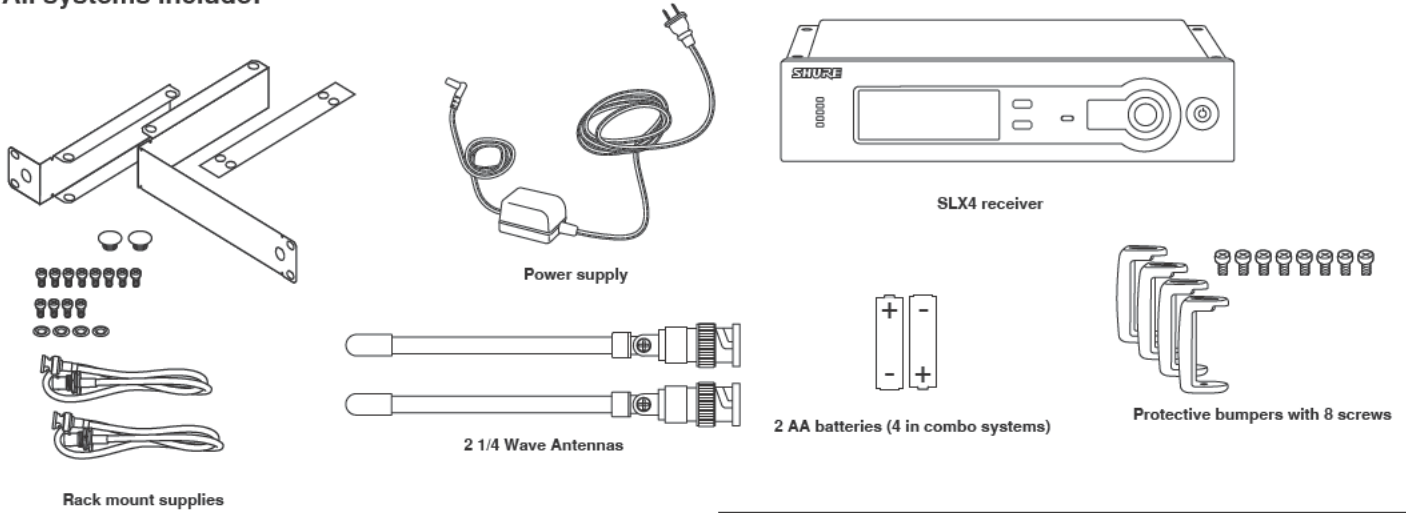
Smart, Hard-working Wireless

Congratulations! Welcome to Shure SLX Wireless. Your new system is rugged, reliable, easy to set up and operate, and produces outstanding audio clarity. Whether you're a vocalist, guitarist, or instrumentalist, your SLX Wireless system will show you how easy wireless can be, and how good wireless can sound.

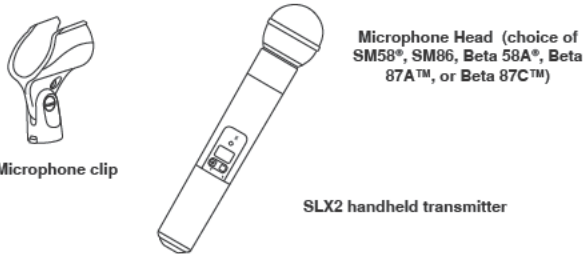
Welcome to the world of SLX: smart, hard-working wireless.

System Components

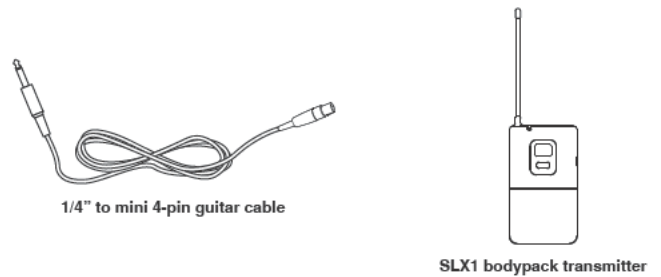
All systems include:



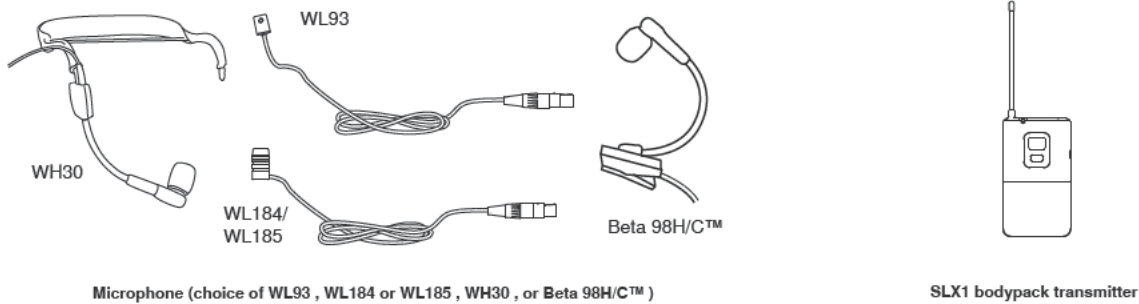
Vocalist system includes:



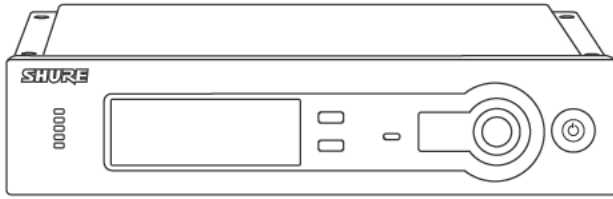
Guitar system includes:



Lavalier, Headworn, and Instrument systems include:

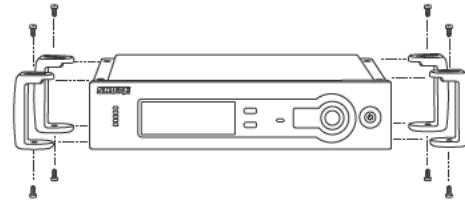


SLX4 Receiver



Adding protective bumpers

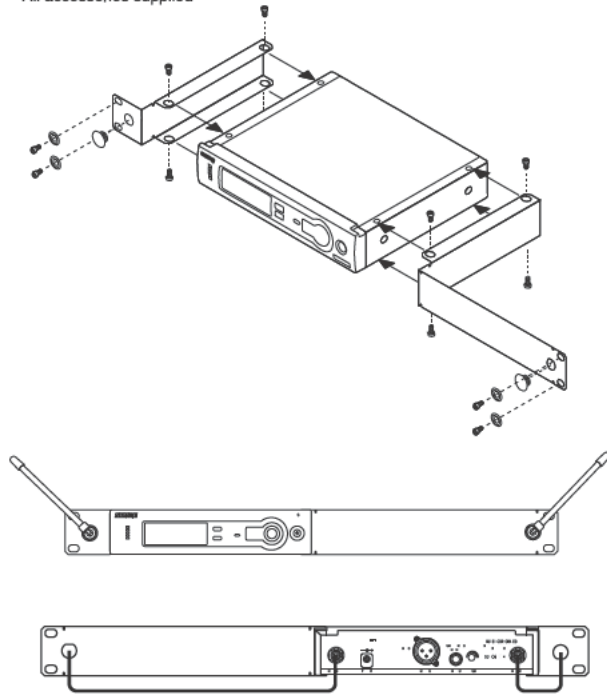
Recommended if receiver is not rack mounted. Use supplied screws.



Rack-Mounting SLX Receivers

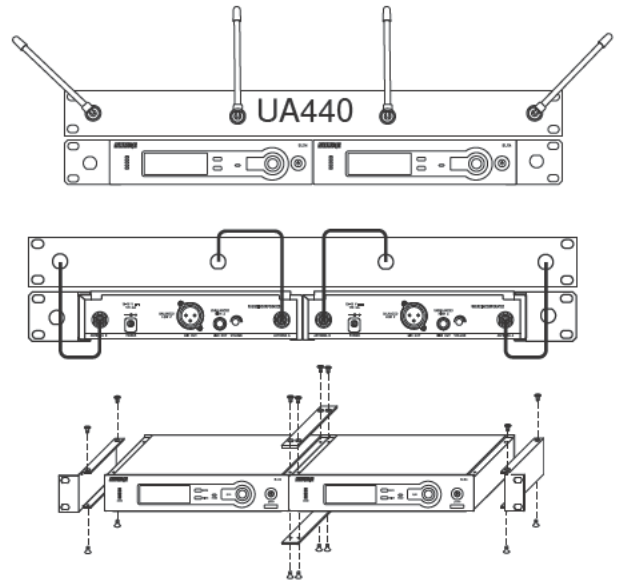
One Receiver

- All accessories supplied



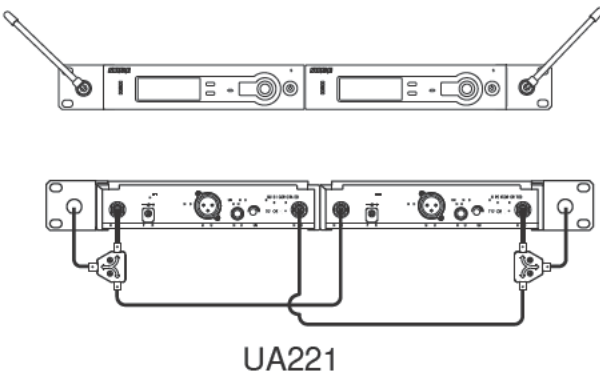
Two Receivers

- Required Accessories: 1 x UA440



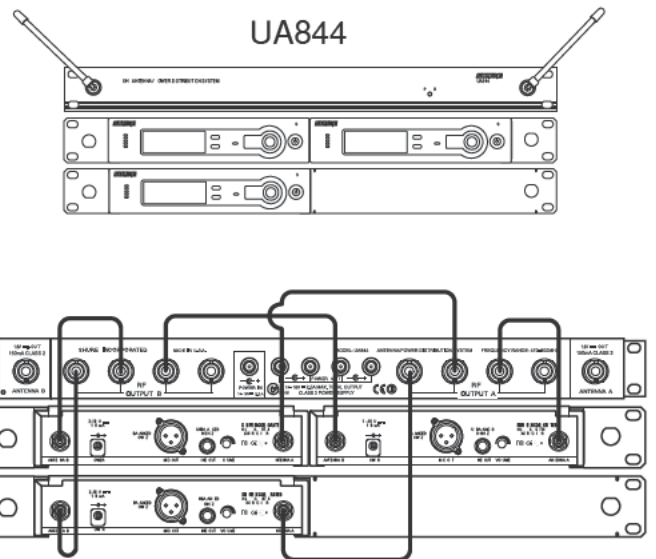
Two Receivers with UA221 Antenna Splitter/Combiner Kit

- Required Accessories: 1 x UA221



Three or Four Receivers

- Required Accessories: 1 x UA844



Single System Setup

Follow these steps when using a single SLX system:

Automatic Frequency Selection

Scans for an available channel and sets the receiver to that channel.

Automatic Transmitter Setup

1. Turn On the transmitter.
2. Open the transmitter battery compartment to display the infrared (IR) port
3. With the IR port exposed to the receiver, press sync.
4. Hold the sync button until the red light stops flashing on both receiver and transmitter.
5. When the receiver ready light glows, the system is ready for use.
6. Close the transmitter battery compartment.

Multiple System Setup

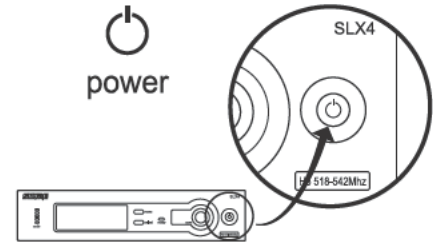
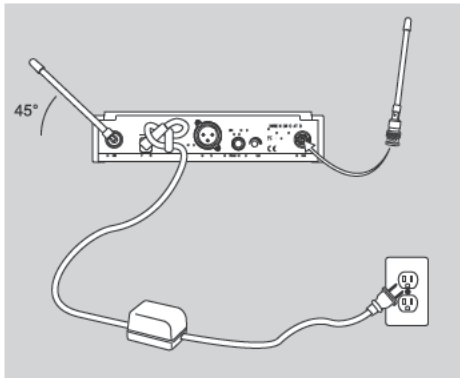
Follow these steps when using multiple SLX systems in a single installation:

1. Turn all receivers on and all transmitters off.
2. Set all receivers to the same frequency group
3. Perform **Automatic Frequency Selection** from the Single System Setup section above.
4. Turn on the first transmitter.
5. Perform **Automatic Transmitter Setup** from the Single System Setup section above.
6. Repeat for each system.

Be sure that only one transmitter's IR port is exposed when synchronizing a system.

On/Off switch

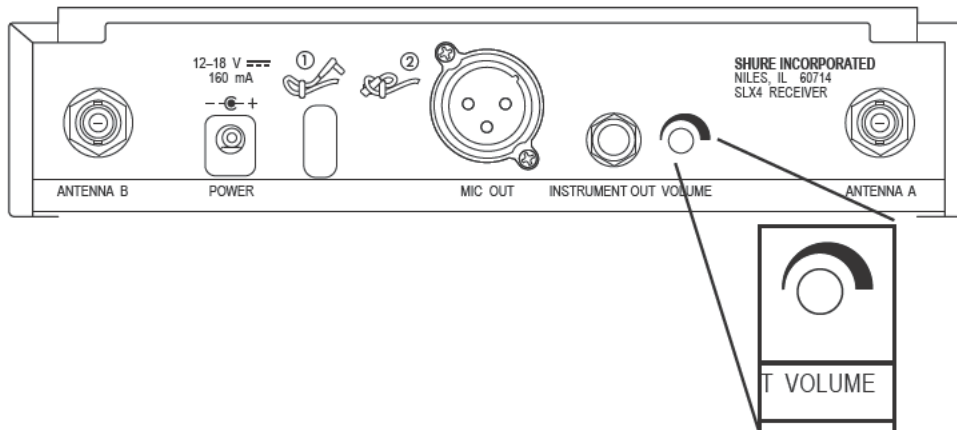
Tap to turn on, hold to turn off.



Receiver Volume Control

The volume control dial should generally be left in the clockwise position. Turning the dial counter-clockwise decreases receiver output level.

If adjustments are necessary, use a small screwdriver to turn the dial.



SLX4 LCD



Full Group Warning

The **FULL** warning indicates that all available channels in the currently selected group are in use. When this occurs, reprogram all systems to an alternate group.

Press either the menu or select button to exit the warning screen.



Transmitter Battery Status

Indicates a low transmitter battery charge.



Antenna Status

Indicates RF activity. Only one antenna is active at any one time.

SLX4 Receiver Programming

Any option displayed on screen will generally "time out" after five seconds.

Group Selection

Allows manual selection of a frequency group. Pressing select increases the group number by one. When the correct frequency is displayed, either wait five seconds for the screen to time out, or press sync. For best results when operating multiple systems, set all systems to a single group; then set each system to a unique channel within that group.



GROUP
SELECT

- ① 2x menu
- ② select
- ③ sync

Display Frequency

Displays the current frequency in MHz for approximately 5 seconds. Press and hold to increase display length.



DISPLAY
FREQUENCY

- ① 4x menu
- ② select
- ③ sync

Lock or Unlock Receiver Settings

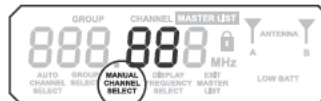
Hold down the select key and press menu to lock or unlock the receiver. When locked, the current receiver settings cannot be changed.



select + menu

Manual Channel Selection

Allows manual selection of a frequency channel. Pressing select increases the channel number by one. When the correct frequency is displayed, either wait five seconds for the screen to time out, or press sync.

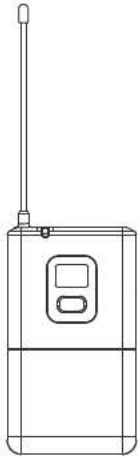


MANUAL
CHANNEL
SELECT

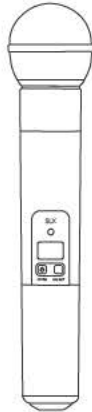
- ① 3x menu
- ② select
- ③ sync

SLX1 & SLX2 Transmitters

SLX1



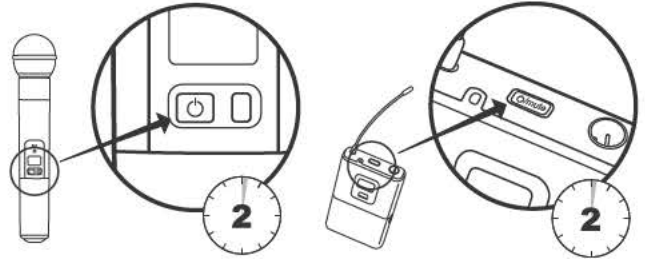
SLX2



On-off / mute switch

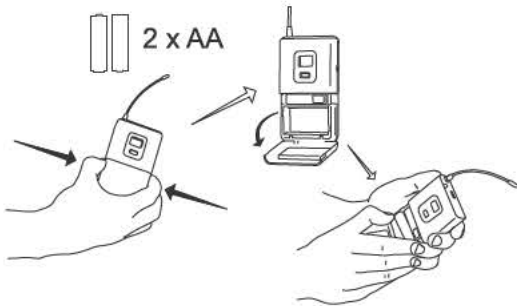
Press and hold to turn on or off. Press and release to mute or unmute.

To avoid accidentally muting the microphone during a performance, lock the front panel while the microphone is in use.



Changing Batteries

- Expected life for an Alkaline battery is approximately 8 hours.
- When the transmitter light glows red, the batteries should be changed immediately, as shown on the left.



Power / Infrared (IR) / Mute indicator

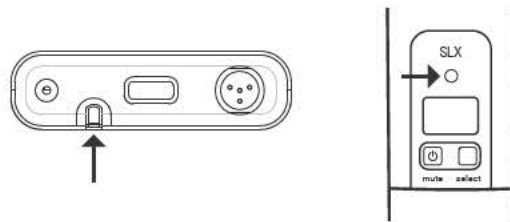
Green: ready

Amber: mute on

Flashing red: IR transmission in process

Glowing red: battery power low

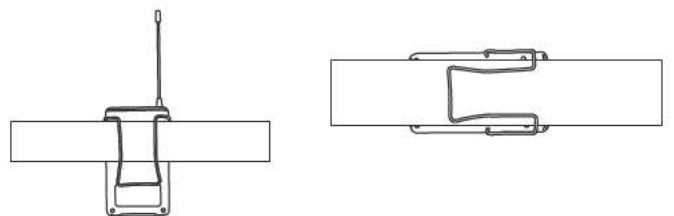
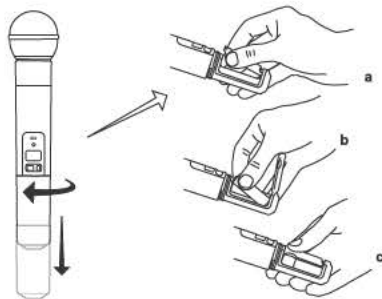
Pulsing red: battery dead (transmitter cannot be turned on until batteries are changed)



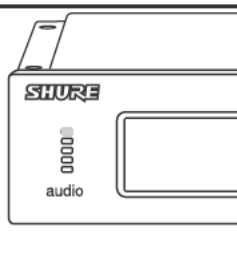
Wearing the Bodypack Transmitter

Clip the transmitter to a belt or slide a guitar strap through the transmitter clip as shown.

For best results, slide the transmitter until the belt is pressed against the base of the clip.



If the receiver LED indicates the input volume is overloading the receiver, try switching the gain to a lower setting.



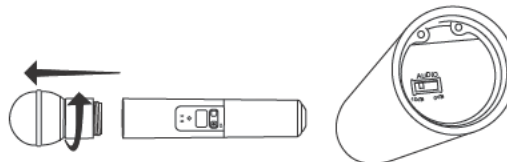
SLX2

Adjusting Gain

Access the gain adjustment switch by unscrewing the head of the microphone.

Two gain settings are available on the SLX2. Choose a setting appropriate for vocal volume and for the performing environment. Use the tip of a pen or a small screwdriver to move the switch.

- 0dB: For quiet to normal vocal performance.
- -10dB: For loud vocal performance.

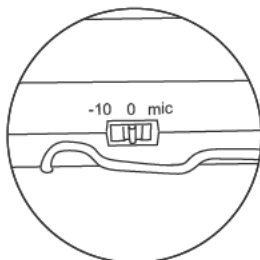


SLX1

Adjusting Gain

Three gain settings are available on the SLX1. Choose the appropriate setting for your instrument.

- mic: Microphone (higher amplification)
- 0: Guitar with passive pickups (medium amplification)
- -10: Guitar with active pickups (lower amplification)



SLX1 and SLX2 Transmitter Programming

Manually Select a Group and/or Channel

1. Press and hold the select button until the GROUP and CHANNEL displays alternate.
2. To change the group setting, release the select button while GROUP is displayed. While GROUP is flashing, pressing select increases the group setting.
3. To change the channel setting, release the select button while CHANNEL is displayed. While CHANNEL is flashing, pressing select increases the channel setting.



Lock or Unlock Transmitter Settings

Press the mute and select buttons simultaneously to lock or unlock the transmitter settings. When locked, the current settings cannot be changed manually. Locking the transmitter does not disable infrared synchronization.



SLX1 & SLX2 LCD



Battery Status

Indicates charge remaining in transmitter batteries.



INCOMPATIBLE Frequency Warning

The INCOMPATIBLE warning indicates that the receiver and transmitter are set to incompatible frequency bands. Contact your Shure retailer for assistance.



Master List Indicator

Indicates that a master list frequency is currently in use. No group or channel information is displayed.

Note: the transmitter cannot be used to change master list settings.

SLX

Working Range Line of Sight	100 m (300 ft) Note: Actual range depends on RF signal absorption, reflection and interference.
Audio Frequency Response	45–15000 Hz Note: Dependent on microphone type
Total Harmonic Distortion Ref. ±38 kHz deviation with 1 kHz tone	<0.5%, typical
Dynamic Range	>100 dB, A-weighted
Operating Temperature Range	-18°C (0°F) to +50°C (122°F) Note: Battery characteristics may limit this range.
Transmitter Audio Polarity	Positive pressure on microphone diaphragm (or positive voltage applied to tip of WA302 phone plug) produces positive voltage on pin 2 (with respect to pin 3 of low-impedance output) and the tip of the high impedance 1/4-inch output.

SLX1

Audio Input Level	gain position mic: -10 dBV maximum 0dB: +10 dBV maximum -10dB: +20 dBV maximum
Gain Adjustment Range	30 dB
Input Impedance	1 MΩ
RF Output Power	10–30 mW varies by region
Pin Assignments TA4M	1: ground (cable shield) 2: +5 V Bias 3: audio 4: Tied through active load to ground (On instrument adapter cable, pin 4 floats)
Dimensions	108mm x 64mm x 19mm (H x W x D)
Weight	81 g (3 oz.), without batteries
Housing	galvanized steel
Power Requirements	2 "AA" size alkaline or rechargeable batteries
Battery Life	up to 8 hours (alkaline)

SLX2

Maximum Input Level	at -10 dB gain setting: +2 dBV at 0 dB gain setting: -8 dBV
Gain Adjustment Range	10 dB
RF Output Power	10–30 mW varies by region
Dimensions	254mm X 51mm dia. (10 X 2in.)
Weight	290 g (10.2oz.) (without batteries)
Housing	Molded PC/ABS handle and battery cup
Power Requirements	2 "AA" size alkaline or rechargeable batteries
Battery Life	up to 8 hours (alkaline)

SLX4

Dimensions	42mm X 197mm X 134mm (H x W x D)
Weight	816 g (1 lb 13oz.)
Housing	galvanized steel
Sensitivity	-105 dBm for 12 dB SINAD, typical
Power Requirements	12–18 V DC @ 150 mA, supplied by external power supply (tip positive)
Configuration	Impedance balanced
Maximum Audio Output Level Ref. ±38 kHz deviation with 1 kHz tone	XLR connector: -13 dBV (into 600 Ω load) 6.35 mm (1/4") connector: -2 dBV (into 3 kΩ load)
Impedance	XLR connector: 200 Ω 6.35 mm (1/4") connector: 1 kΩ
Pin Assignments	XLR connector: 1=ground, 2=audio, 3=no audio 6.35 mm (1/4") connector: Tip=audio, Ring=no audio, Sleeve=ground
Image Rejection	>70 dB, typical
Volume Adjustment Range	0 dB to -25 dB

Frequency Range and Transmitter Output Level

Band	Range	Output Power
G4	470 to 494 MHz	30 mW
G4E	470 to 494 MHz	30 mW
G5	494 to 518 MHz	30 mW
G5E	494 to 518 MHz	30 mW
G8	494 200 to 509 825 MHz	30 mW
H5	518 to 542 MHz	30 mW
J3	572 to 596 MHz	30 mW
L4	638 to 662 MHz	30 mW
L4E	638 to 662 MHz	30 mW
P4	702 to 726 MHz	30 mW
R13	794 to 806 MHz	20 mW
R5	800 to 820 MHz	20 mW
X4	925 to 932 MHz	10 mW
S6	838 to 865 MHz	10 mW
S10	823 to 832 MHz	10 mW
JB	806 to 810 MHz	10 mW
R19	794 to 806 MHz	10 mW
Q4	740 to 752 MHz	10 mW
K3E	606 to 630 MHz	10 mW

NOTE:

This Radio equipment is intended for use in musical professional entertainment and similar applications.

This Radio apparatus may be capable of operating on some frequencies not authorized in your region. Please contact your national authority to obtain information on authorized frequencies and RF power levels for wireless microphone products.

Frequency Band Selection

Most countries closely regulate the radio frequencies used in the transmission of wireless information. These regulations state which devices can use which frequencies, and help to limit the amount of RF (radio frequency) interference in all wireless communications.

To be flexible enough to operate worldwide, SLX receivers are available in a number of models, each with a unique frequency range. Each frequency range, or band, spans up to 24 MHz of the wireless broadcast spectrum.

To facilitate system setup and protect against RF interference, each system comes with multiple predefined frequency groups and channels.

When using a single SLX system, the operating frequency will generally not have to be changed. In an installation with multiple receiver/transmitter systems, each system must operate on a separate channel. The group and channel system provides an optimum frequency spread when using multiple systems.

Within a single frequency band, up to 12 individual transmitter/receiver systems may be used in a single installation. In regions where additional frequency bands are available, it is possible to operate up to 20 systems simultaneously. Check with your local Shure retailer for information on which bands are available in your area.

The Master Frequency List

Using the Master List

The "Master List" of frequencies should be accessed only by experienced users in situations which call for precise frequency selection. The "Master List" is a comprehensive index of all available frequencies in 25 kHz increments. (125 kHz increments in the JB band.)

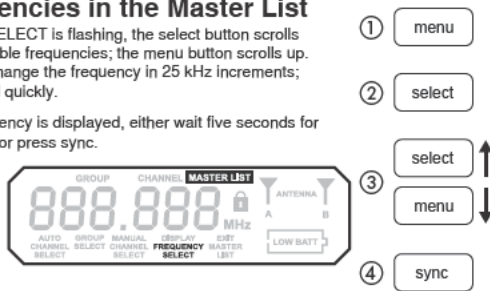
To access the Master List, hold down the menu button while powering on the SLX receiver.



Select Frequencies in the Master List

While FREQUENCY SELECT is flashing, the select button scrolls down through all available frequencies; the menu button scrolls up. Press and release to change the frequency in 25 kHz increments; press and hold to scroll quickly.

When the correct frequency is displayed, either wait five seconds for the screen to time out, or press sync.



Exit the Master List

To exit the Master List and return to normal system operations, press menu, then select.



Tips for Improving System Performance

Performance

- Maintain a line of sight between transmitter and antenna
- Avoid placing the receiver near metal surfaces or any digital equipment (CD players, computers, etc.)
- Secure the AC adapter cable to the receiver using the cable retainer loop
- If rack-mounting the receiver, front-mount the antennas

Issue	Indicator Status	Solution
No sound or faint sound	Transmitter power light off	<ul style="list-style-type: none"> • Turn transmitter on • Make sure the +/- indicators on battery match the transmitter terminals • Insert a fresh battery
	Receiver LCD off	<ul style="list-style-type: none"> • Make sure AC adapter is securely plugged into electrical outlet and into DC input connector on rear panel of receiver • Make sure AC electrical outlet works and is supplying proper voltage
	Receiver display indicates antenna activity	<ul style="list-style-type: none"> • Press mute switch on transmitter • Turn up receiver volume control • Increase transmitter gain switch setting • Check cable connection between receiver and amplifier or mixer
	Receiver display indicates no antenna activity; transmitter and receiver power lights glowing	<ul style="list-style-type: none"> • Extend receiver antennas vertically • Move receiver away from metal objects • Check for line of sight between transmitter and receiver • Move transmitter closer to receiver • Check that receiver and transmitter are using the same frequency
	Transmitter power light glowing or flashing red	Replace transmitter batteries
	INCOMPATIBLE warning on transmitter	The INCOMPATIBLE warning indicates that the receiver and transmitter are set to incompatible frequency bands. Contact your Shure retailer for assistance.
Distortion or unwanted noise bursts	Receiver display indicates antenna activity	<ul style="list-style-type: none"> • Remove nearby sources of RF interference (CD players, computers, digital effects, in-ear monitor systems, etc.) • Change receiver and transmitter to a different frequency • Reduce transmitter gain • Replace transmitter battery • If using multiple systems, increase the frequency spread between systems.
	Transmitter power light glowing or flashing red	Replace transmitter batteries
Distortion level increases gradually	Transmitter power light glowing or flashing red	Replace transmitter batteries
Sound level different from cabled guitar or microphone, or when using different guitars		Adjust transmitter gain and receiver volume as necessary
FULL warning displays on receiver		The FULL warning indicates that all available channels in the currently selected group are in use. When this occurs, reprogram all systems to an alternate group.
Cannot turn transmitter off	Transmitter light flashing red	Replace transmitter batteries

Accessories and Parts

Optional Accessories

Carrying Case	WA610
Black Grille for BETA 58A	RK323G
Black Grille for BETA 87A and BETA 87C	RK324G

Replacement Parts

Microphone Stand Adapter (SLX2)	WA371
Zipper Bag (SLX1)	26A13
Zipper Bag (SLX2)	26A14
Short Rack Bar	53A8611
Long Rack Bar	53A8612
Link Bar	53B8443
Antenna extension cables (2)	95A9023
Protective Bumpers (SLX4 Receiver) (4)	90A8977
AC Adapter (120 VAC, 60 Hz)	PS21
AC Adapter (220 VAC, 50 Hz)	PS21AR
AC Adapter (230 VAC, 50/60 Hz, Europlug)	PS21E
AC Adapter (230 VAC, 50/60 Hz)	PS21UK
AC Adapter (100 VAC, 50/60 Hz)	PS21J
SM58® Cartridge with Grille (SLX2/SM58)	RPW112
SM86 Cartridge with Grille (SLX2/SM86)	RPW114
BETA 58A® Cartridge with Grille (SLX2/BETA 58)	RPW118
BETA 87A Cartridge with Grille (SLX2/BETA 87A)	RPW120
BETA 87C Cartridge with Grille (SLX2/BETA 87C™)	RPW122
Matte Silver Grille for SM58® (SLX2/SM58)	RK143G
Matte Silver Grille for SM86 (SLX2/SM86)	RPM226
Matte Silver Grille for BETA 58A® (SLX2/BETA 58)	RK265G
Matte Silver Grille for BETA 87A (SLX2/BETA 87A)	RK312
Matte Silver Grille for BETA 87C (SLX2/BETA 87C™)	RK312
Belt Clip	44A8030
1/4-Wave Antenna (470 - 752 MHz)	UA400B
1/4-Wave Antenna (774 - 952 MHz)	UA400

Antenna Combiners and Accessories

Antennas and receivers must be from the same band.

The supplied 1/4 wave antennas can be used when mounted directly to the UA844. If antennas are remote mounted, 1/2 wave antennas must be used.

Antennas and cables are for use with UA844, and cannot be used with stand-alone SLX receivers

Passive Antenna/Splitter Combiner Kit (recommended for 2 receivers)	UA221
25' Antenna Cable	UA825
50' Antenna Cable	UA850
100' Antenna Cable	UA100
1/2 Wave Antenna Remote Mount Kit	UA505
UHF Antenna Power Distribution Amplifier (recommended for 3 or more receivers)	
U.S.A.	UA844US
Europe	UA844E
UK	UA844UK
1/2 wave antenna	
H5 Band	UA820H
J3 Band	UA820F
L4 Band	UA820L
P4, Q4 Bands	UA820B
R13, R5, S6, JB Bands	UA820A

CERTIFICATION

SLX1, SLX2, SLX4

This Class B digital apparatus complies with Canadian ICES-003.

Cet appareil numérique de la classe B est conforme à la norme NMB-003 du Canada.

Meets requirements of EMC standards EN 300 422 Parts 1 and 2 and EN 301 489 Parts 1 and 9.

Meets essential requirements of European R&TTE Directive 99/5/EC, eligible to bear the CE mark.

SLX1, SLX2

Certified under FCC Part 74. (FCC ID: DD4SLX1, DD4SLX2). Certified by IC in Canada under RSS-123 and RSS-102. (IC: 616A-SLX1, 616A-SLX1G5, 616A-SLX2, 616A-SLX2G5).

SLX4

Approved under the Declaration of Conformity (DoC) provision of FCC Part 15. Certified in Canada by IC to RSS-123. (IC: 616A-SLX4, 616A-SLX4G5).

Operation of this device is subject to the following two conditions: (1) this device may not cause interference, and (2) this device must accept any interference, including interference that may cause undesired operation of the device.

The CE Declaration of Conformity can be obtained from Shure Incorporated or any of its European representatives. For contact information please visit www.shure.com

The CE Declaration of Conformity can be obtained from: www.shure.com/europe/compliance

Authorized European representative:

Shure Europe GmbH

Headquarters Europe, Middle East & Africa

Department: EMEA Approval

Jakob-Dieffenbacher-Str.12,

75031 Eppingen, Germany

Phone: +49-7262-92490

Fax: +49-7262-9249114

Email: EMEAsupport@shure.de

LICENSING INFORMATION

Licensing: A ministerial license to operate this equipment may be required in certain areas. Consult your national authority for possible requirements. Changes or modifications not expressly approved by Shure Incorporated could void your authority to operate the equipment. Licensing of Shure wireless microphone equipment is the user's responsibility, and licensability depends on the user's classification and application, and on the selected frequency. Shure strongly urges the user to contact the appropriate telecommunications authority concerning proper licensing, and before choosing and ordering frequencies.

Information to the user

This equipment has been tested and found to comply with the limits for a Class B digital device, pursuant to Part 15 of the FCC Rules. These limits are designed to provide reasonable protection against harmful interference in a residential installation. This equipment generates uses and can radiate radio frequency energy and, if not installed and used in accordance with the instructions, may cause harmful interference to radio communications. However, there is no guarantee that interference will not occur in a particular installation. If this equipment does cause harmful interference to radio or television reception, which can be determined by turning the equipment off and on, the user is encouraged to try to correct the interference by one or more of the following measures:

- Reorient or relocate the receiving antenna.
- Increase the separation between the equipment and the receiver.
- Connect the equipment to an outlet on a circuit different from that to which the receiver is connected.
- Consult the dealer or an experienced radio/TV technician for help.

Note: EMC conformance testing is based on the use of supplied and recommended cable types. The use of other cable types may degrade EMC performance.

Changes or modifications not expressly approved by the manufacturer could void the user's authority to operate the equipment.

WARNING: Dispose of properly. Check with local vendor for proper disposal of used battery and electronics.

EUROPEAN COUNTRY-GROUP MATRIX FREQUENCY BANDS

SLX H5 518-542 MHz, max. 30 mW	
Country Code	Frequency Range
Code de Pays	Gamme de frequences
Länder-Kürzel	Frequenzbereich
A, B, CH, CZ, D, E, EST	518-542 MHz *
F, GB, GR, H, I, IRL, L	518-542 MHz *
LT, M, NL, P, PL, SLO	518-542 MHz *
DK, FIN, N, S	*
CY, LV, SK	*
All other Countries	*

P4 702-726 MHz, max. 30 mW	
Country Code	Frequency Range
Code de Pays	Gamme de frequences
Länder-Kürzel	Frequenzbereich
A, B, CH, CZ, D, E, EST	702-726 MHz *
F, GB, GR, H, I, IRL, L	702-726 MHz *
LT, M, NL, P, PL, SLO	702-726 MHz *
DK, FIN, N, S	*
CY, LV, SK	*
All other countries	*

SLX J3 572-596 MHz, max. 30 mW	
Country Code	Frequency Range
Code de Pays	Gamme de frequences
Länder-Kürzel	Frequenzbereich
A, B, CH, CZ, D, E, EST	572-596 MHz *
F, GB, GR, H, I, IRL, L	572-596 MHz *
LT, M, NL, P, PL, SLO	572-596 MHz *
DK, FIN, N, S	*
CY, LV, SK	*
All other countries	*

R5 800-820 MHz, max. 20 mW	
Country Code	Frequency Range
Code de Pays	Gamme de frequences
Länder-Kürzel	Frequenzbereich
B, CH, D, EST	800-820 MHz *
F, GB, GR, H, I, IRL, L	800-820 MHz *
FIN, LT, N, NL, P, PL, SLO	800-820 MHz *
CZ	815-820 MHz *
A, CY, DK, E, LV, M, S, SK	*
All other countries	*

SLX-L4/-L4E 638-662 MHz, max. 30 mW	
Country Code	Frequency Range
Code de Pays	Gamme de frequences
Codice di paese:	Gamme di frequenza
Código de país:	Gama de frecuencias
Länder-Kürzel	Frequenzbereich
A, BG, CH, CY, CZ, D, EST	638-662 MHz *
F, GB, GR, H, I, IS, LT	638-662 MHz *
P, PL, S, SK, SLO	638-662 MHz *
B, DK, E, FIN, HR, IRL, L	*
LV, M, N, NL, RO, TR	*
All other countries	*

S6 838-865 MHz, max. 10 mW	
Country Code	Frequency Range
Code de Pays	Gamme de frequences
Länder-Kürzel	Frequenzbereich
B, CH, D, EST	838-865 MHz *
GB, H, I, IRL, L	838-865 MHz *
LT, M, NL, P, PL, SLO	838-865 MHz *
A, CY, CZ, DK, E, F, F N	*
GR, N, LV, S, SK	*
All other countries	*

SLX-G4E 470 - 494 MHz, max. 30 mW	
Country Code	Frequency Range
Code de Pays	Gamme de frequences
Codice di paese	Gamme di frequenza
Código de país	Gama de frecuencias
Länder-Kürzel	Frequenzbereich
A, B, BG, CH, CY, CZ, D, EST	470 - 494 MHz *
F, GB, GR, H, I, IS, L, LT	470 - 494 MHz *
NL, P, PL, S, SK, SLO	470 - 494 MHz *
DK, FIN, M, N	*
HR, E, IRL, LV, RO, TR	*
all other countries	*

SLX-G5E 494 - 518 MHz, max. 30 mW	
Country Code	Frequency Range
Code de Pays	Gamme de frequences
Codice di paese	Gamme di frequenza
Código de país	Gama de frecuencias
Länder-Kürzel	Frequenzbereich
A, B, BG, CH, CY, CZ, D, EST	494 - 518 MHz *
F, GB, GR, H, I, IS, L, LT	494 - 518 MHz *
NL, P, PL, S, SK, SLO	494 - 518 MHz *
DK, FIN, M, N	*
HR, E, IRL, LV, RO, TR	*
all other countries	*

EUROPEAN COUNTRY–GROUP MATRIX FREQUENCY BANDS

SLX-K3E 606 - 630 MHz, max. 10 mW	
Country Code	Frequency Range
Code de Pays	Gamme de frequences
Codice di paese	Gamme di frequenza
Código de país	Gama de frecuencias
Länder-Kürzel	Frequenzbereich
A, BG, CH, CY, CZ, D, EST	606 - 630 MHz *
F, GB, GR, H, I, IS, L, LT	606 - 630 MHz *
P, PL, S, SK, SLO	606 - 630 MHz *
B, DK, FIN, M, N, NL	*
HR, E, IRL, LV, RO, TR	*
all other countries	*

SLX-Q24 736 - 754 MHz, max. 30 mW	
Country Code	Frequency Range
Code de Pays	Gamme de frequences
Codice di paese	Gamme di frequenza
Código de país	Gama de frecuencias
Länder-Kürzel	Frequenzbereich
A, B, BG, CH, CY, CZ, D, EST	736- 754 MHz *
F, GB, GR, H, I, IS, L, LT	736- 754 MHz *
NL, P, PL, S, SK, SLO	736- 754 MHz *
RO	736-743 MHz, 750-751 MHz *
DK, E, FIN, HR, IRL, LV, M, N, TR	*
all other countries	*

SLX S10 823-832 MHz, max. 10 mW	
Country Code	Frequency Range
Code de Pays	Gamme de frequences
Codice di paese	Gamme di frequenza
Código de país	Gama de frecuencias
Länder-Kürzel	Frequenzbereich
A, CH, D, DK	823-832 MHz*
B, BG, CY, CZ	*
E, EST, F, F N, GB, GR, H, HR	*
I, IRL, IS, LV, L, LT, M, N, NL, P, PL	*
S, SK, SLO, RO, TR	*
all other countries	*

Frequency Ranges

H5: 518.000–542.000 MHz

	GROUP 1	GROUP 2	GROUP 3	GROUP 4	GROUP 5	GROUP 6
1	518.400	519.250	518.200	519.775	519.100	518.425
2	521.500	520.500	519.675	522.500	521.225	520.400
3	523.575	522.225	520.800	524.200	522.550	523.425
4	525.050	524.725	522.450	525.600	524.575	525.475
5	527.425	526.350	523.750	526.700	526.900	527.775
6	529.200	527.550	526.200	528.250	530.500	531.675
7	532.450	530.800	528.325	529.500	531.750	533.800
8	533.650	532.575	532.225	533.100	533.300	536.250
9	535.275	534.950	534.525	535.425	534.400	537.550
10	537.775	536.425	536.575	537.450	535.800	539.200
11	539.500	538.500	539.600	538.775	537.500	540.325
12	540.750	541.600	541.575	540.900	540.225	541.800
	Full Range - even distribution for each TV-CH	Full Range - even distribution for each TV-CH	Full Range - max. # of frequencies for CH- 22	Full Range - max. # of frequencies for CH- 23	Full Range - max. # of frequencies for CH- 24	Full Range - max. # of frequencies for CH- 25

J3: 572.000–596.000 MHz

	GROUP 1	GROUP 2	GROUP 3	GROUP 4	GROUP 5	GROUP 6
1	572.400	573.250	572.200	573.775	573.100	572.425
2	575.500	574.500	573.675	576.500	575.225	574.400
3	577.575	576.225	574.800	578.200	576.550	577.425
4	579.050	578.725	576.450	579.600	578.575	579.475
5	581.425	580.350	577.750	580.700	580.900	581.775
6	583.200	581.550	580.200	582.250	584.500	585.675
7	586.450	584.800	582.325	583.500	585.750	587.800
8	587.650	586.575	586.225	587.100	587.300	590.250
9	589.275	588.950	588.525	589.425	588.400	591.550
10	591.775	590.425	590.575	591.450	589.800	593.200
11	593.500	592.500	593.600	592.775	591.500	594.325
12	594.750	595.600	595.575	594.900	594.225	595.800
	Full Range - even distribution for each TV-CH	Full Range - even distribution for each TV-CH	Full Range - max. # of frequencies for CH- 31	Full Range - max. # of frequencies for CH- 32	Full Range - max. # of frequencies for CH- 33	Full Range - max. # of frequencies for CH- 34

L4: 638.000–662.000 MHz

	GROUP 1	GROUP 2	GROUP 3	GROUP 4	GROUP 5	GROUP 6
1	638.400	639.250	638.200	639.775	639.100	638.425
2	641.500	640.500	639.675	642.500	641.225	640.400
3	643.575	642.225	640.800	644.200	642.550	643.425
4	645.050	644.725	642.450	645.600	644.575	645.475
5	647.425	646.350	643.750	646.700	646.900	647.775
6	649.200	647.550	646.200	648.250	650.500	651.675
7	652.450	650.800	648.325	649.500	651.750	653.800
8	653.650	652.575	652.225	653.100	653.300	656.250
9	655.275	654.950	654.525	655.425	654.400	657.550
10	657.775	656.425	656.575	657.450	655.800	659.200
11	659.500	658.500	659.600	658.775	657.500	660.325
12	660.750	661.600	661.575	660.900	660.225	661.800
	Full Range - even distribution for each TV-CH	Full Range - even distribution for each TV-CH	Full Range - max. # of frequencies for CH- 42	Full Range - max. # of frequencies for CH- 43	Full Range - max. # of frequencies for CH- 44	Full Range - max. # of frequencies for CH- 45

P4: 702.000–726.000 MHz

	Group 1	Group 2	Group 3	Group 4	Group 5	Group 6	Group 7	Group 8
1	702.200	703.750	703.650	702.750	703.750	702.100	704.775	702 300
2	704.200	705 975	705.650	704 500	705.750	704 025	706.225	704 975
3	707.200	707 200	708.650	705.750	708.250	705 500	710.500	706.775
4	709.425	708 850	710.875	708 250	711.750	708 500	712.025	709.100
5	711.000	710 950	712.450	711 250	714.500	710.100	714.225	710 300
6	713.675	712.425	715.125	712 500	715.750	712 025	716.900	712 225
7	715.575	714 325	717.025	715 250	718.750	713 500	718.500	714.775
8	717.050	717 000	718.500	718.750	721.250	717 300	720.775	716.700
9	719.150	718 575	720.600	721 250	722.500	725 300	725.300	724 000
10	720.800	720 800	722.250	723 250	724.250			725 900
11	722.025	723 800	723.475					
12	724.250	725 800	725.700					
	Full Range - max. # of compatible frequencies	Full Range - max. # of compatible frequencies	Full Range - max. # of compatible frequencies	France preferred: User Group A	France preferred: User Group A	France preferred: User Group B	France preferred: User Group B	France preferred: User Group C

	Group 9	Group 10	Group 11	Group 12	Group 13	Group 14	Group 15	Group 16
1	703.000	702 200	710.200	718 200	702.550	702.100	702.700	702 500
2	706.025	703 300	711.300	719 300	705.600	704.700	704.700	705 500
3	708.000	704.700	712.700	720.700	707.500	710 300	709.450	707 000
4	710.300	705.800	713.800	721 800	709.000	712.400	711.500	712 200
5	712.225	707 675	715.675	723 675	711.500	714 000	714.500	714.100
6	716.000	708.775	716.775		715.100	716 500	716.550	716.400
7	717.100				717.000	719.400	719.900	719 500
8	719.000				720.000	721 300	722.000	722 200
9	720.225				723.500		724.700	
10	722.775				725.900		725.900	
11	724.700							
	France preferred: User Group C	Optimized TV channels: TV ch. 50 702-710 MHz	Optimized TV channels: TV ch. 51 710-718 MHz	Optimized TV channels: TV ch. 52 718-724 MHz	Compatible setup for use with PSM400-P3 (P4 > P3)	Compatible setup for use with PSM400-P3 (P4 = P3)	Compatible setup for use with PSM400-HF (P4 > HF)	Compatible setup for use with PSM400-HF (P4 = HF)

R5: 800.100–819.900 MHz

	Group 1	Group 2	Group 3	Group 4	Group 5	Group 6	Group 7
1	801.250	801 225	800.950	800 525	801.475	800 600	800.650
2	804.825	804 800	802.950	801 925	803.025	802 050	803.125
3	806.975	806 950	804.325	803 650	805.800	804 275	804.450
4	808.800	808.775	806.425	804 850	806.950	805.750	806.150
5	810.325	810 300	808.050	807.400	809.125	806 850	807.250
6	811.550	811 525	809.275	808 525	810.575	808 550	808.725
7	813.175	813.150	810.800	810 275	811.725	809 875	810.950
8	815.275	815 250	812.625	811 550	813.800	812 350	812.400
9	816.650	816 625	814.775	813.775		813.450	813.500
10	818.650	818 625	818.350				
11	819.750	819 800	819.775				
	Full Range - max. # of comp. Frequencies & FIN / NOR / DEN	Full Range - max. # of comp. Frequencies & FIN / NOR / DEN	Full Range - max. # of comp. Frequencies & FIN / NOR / DEN	Germany preferred: User Group 4 800-814 MHz	Germany preferred: User Group 4 800-814 MHz	Sweden preferred: 800-814 MHz	Sweden preferred: 800-814 MHz

	Group 8	Group 9	Group 10	Group 11	Group 12	Group 13	Group 14
1	806 000	806.025	801.400	800.900	801.200	803 850	806.150
2	807.100	807.425	808 300	802.100	803.800	807 000	811.650
3	808 500	808.525	816.400	806.200	805.900	809.700	814.400
4	809 600	810.400		809.300	807.000	811 050	816.500
5	811.475	811.500		814.100	809.200	813 900	817.450
6	812 575	812.900		816.100	811.700	816 500	819.300
7	813 975	814.000		817.200		817 600	
8				819.600		819 500	
	Netherlands preferred: TV ch. 63 806-814 MHz	Netherlands preferred: TV ch. 63 806-814 MHz	Compatible setup for use with EUT-TL-TV (R5 > TL-TV)	Compatible setup for use with PSM400- MN (R5 > MN)	Compatible setup for use with PSM400-MN (R5 = MN)	Compatible setup for use with PSM200-R8 (R5 > R8)	Compatible setup for use with PSM200-R8 (R5 = R8)

S6: 838.000–865.000 MHz

	Group 1	Group 2	Group 3	Group 4	Group 5	Group 6	Group 7	Group 8
1	838 200	838.150	838 550	854 200	855.475	855 075	854.750	854.750
2	841.450	839 375	839.775	855 300	857.425	857.775	855 850	855 850
3	843 275	841 300	841.700	856.700	860 600	860.725	857 250	857 250
4	846 225	842.475	842 875	857 800			858 350	858 350
5	847 350	846.400	846 800	859 675			860 225	860 225
6	850.125	848 025	848.425	860.775			861 325	861 325
7	852 575	850 025	850.425					
8	854 575	852.475	852 875					
9	856 200	855 250	855 650					
10	860.125	856 375	856.775					
11	861 300	859 325	859.725					
12	863 225	861.150	861 550					
13	864.450	864.400	864 800					
	Full Range - max. # of compatible frequencies	Full Range - max. # of compatible frequencies	Full Rangemax. # of compatible frequencies	BEL / TUR preferred: opt. TV ch 69 854-862 MHz	U K. preferred: "CH69 Coordi- nated" SET 1	U K. preferred: "CH69 Coordinated" SET 2 or SET 3	U K. preferred: "Co-ordinated frequencies" INDOORS	U K. preferred: "Co-ordinated frequencies" OUTDOORS

	Group 9	Group 10	Group 11	Group 12	Group 13	Group 14	Group 15
1	854.425	863.200	838.200	838.900	838.100	838.700	838.400
2	855.525	864.500	839.900	842.600	841.100	842.800	840.600
3	857.400		841.000	845.900	842.700	844.800	842.100
4	858.500		842.375	847.500	847.000	846.300	844.700
5	859.900		844.400	848.600	849.200	847.400	846.600
6	861.000		846.100	850.100	850.400	849.200	848.100
7			847.350	852.100	852.500	851.300	850.700
8			849.400	853.300	854.100		851.850
9			851.800	855.100	855.300		853.700
10			853.200	857.200			
11				858.650			
12				859.800			
13				861.900			
	U K. preferred: "Co-ordinated frequencies" OUTDOORS	European harmonized band: optimized for 863 - 865 MHz	Compatible setup for use with EUT-TW-TZ (S6 > TW-TZ)	Compatible setup for use with EUT-VR-VT (S6 > VR-VT)	Compatible setup for use with PSM400- KE (S6 > KE)	Compatible setup for use with PSM400- KE (S6 = KE)	Compatible setup for use with PSM200- S5 (S6 > S5)

Q4: 740.000–752.000 MHz

	Group 1	Group 2	Group 3	Group 4
1	740.125	740.125	740.125	740.125
2	741.500	741 950	741 225	740.800
3	743.375	743 500	742 925	741.825
4	744.600	745 675	744 325	743.075
5	746.325	747.400	745.425	745.125
6	748.500	748 625	746 875	746.575
7	750.050	750 500	748 925	747.675
8	751.875	751 875	750.175	749.075
9			751 200	750.775
10			751 875	751.875
	Full Range	Full Range	Full Range	Full Range

JB: 806.000–810.000 MHz

	Group 1	Group 2	Group 3	Group 4	Group 5	Group 6
1	806.250	806.375	806.125	806.500	806.125	806.250
2	807.500	808.625	807.375	807.375	807.375	807.250
3	809.625	809.750	809.500	808.625	808.375	808.500
4				809.625	809.750	809.375
	Full Range	Full Range	Full Range	Full Range	Full Range	Full Range

R13: 794.000–806.000 MHz

	Group 1	Group 2	Group 3	Group 4
1	795.150	794.375	794.100	794.900
2	796.850	795.600	795.300	796.100
3	798.100	797.425	797.200	798.000
4	800.750	799.725	798.550	799.350
5	802.200	803.025	800.625	801.425
6	805.350	804.475	802.150	802.950
7			803.350	804.150
8			804.925	805.725
	Full Range	Full Range	Full Range	Full Range

G4: 470.000–494.000 MHz

	Group 1	Group 2	Group 3	Group 4	Group 5	Group 6
1	471.150	470.125	470.275	476.275	482.275	488.275
2	473.275	472.250	471.375	477.375	483.375	489.375
3	474.825	473.800	472.775	478.775	484.775	490.775
4	477.100	476.075	474.575	480.575	486.575	492.575
5	479.800	478.775	475.750	481.750	487.750	493.750
6	482.775	481.750	480.475	471.725	471.250	471.175
7	483.875	482.850	484.550	473.325	474.100	473.950
8	487.075	486.050	487.150	483.275	475.575	475.150
9	489.625	488.600	489.100	487.500	480.675	481.475
10	491.000	489.975	490.225	489.725	489.475	483.475
11	492.625	491.600	491.725	491.225	491.725	484.725
12	493.825	492.800	492.950	492.350	493.550	486.700
	Full G4 Spectrum	Full G4 Spectrum	Full Range, 5 frequencies in TV 14	Full Range, 5 frequencies in TV 15	Full Range, 5 frequencies in TV 16	Full Range, 5 frequencies in TV 17

G5: 494.000–518.000 MHz

	Group 1	Group 2	Group 3	Group 4	Group 5	Group 6
1	495.150	494.125	494.275	500.275	506.275	512.275
2	496.975	495.950	495.375	501.375	507.375	513.375
3	499.275	498.250	496.775	502.775	508.775	514.775
4	501.875	500.850	498.575	504.575	510.575	516.575
5	503.800	502.775	499.750	505.750	511.750	517.750
6	505.175	504.150	502.325	496.400	494.125	495.175
7	507.450	506.425	504.475	498.700	495.250	497.075
8	509.150	508.125	505.750	507.475	497.300	499.700
9	510.300	509.275	508.550	509.750	501.150	501.675
10	511.875	510.850	510.800	511.650	502.575	503.050
11	514.000	512.975	515.200	513.100	515.650	505.525
12	517.150	516.125	516.500	517.075	516.900	510.625
	Full G5 Spectrum	Full G5 Spectrum	Full Range, 5 frequencies in TV 18	Full Range, 5 frequencies in TV 19	Full Range, 5 frequencies in TV 20	Full Range, 5 frequencies in TV 21

G4E (470–494 MHz)

Channel	Group 1	Group 2	Group 3	Group 4	Group 5	Group 6	Group 7
	Full Range max. # of compatible frequencies (option 1)	Full Range max. # of compatible frequencies (option 2)	Full Range max. # of compatible frequencies (option 3)	France preferred: User Group A (option 1)	France preferred: User Group A (option 2)	France preferred: User Group B (option 1)	France preferred: User Group B (option 2)
1	470.750	470.125	470.250	471.250	470.750	470.500	472.025
2	471.900	471.300	471.375	472.500	472.500	472.025	474.975
3	473.550	473.250	472.875	474.500	475.250	474.975	477.300
4	474.850	474.500	474.950	478.750	482.500	477.300	480.025
5	477.350	477.100	476.475	483.750	483.750	480.025	481.500
6	478.575	479.250	479.300	486.750	487.750	481.500	486.100
7	480.550	480.400	480.850	490.500	489.250	486.100	488.775
8	483.200	482.000	483.325	492.250	491.250	488.775	490.225
9	484.375	484.400	484.600			490.225	492.500
10	486.825	485.900	486.175			493.700	493.700
11	488.550	487.975	488.050				
12	489.650	490.350	489.475				
13	492.125	492.075	492.275				
14	493.400	493.375	493.425				

Channel	Group 8	Group 9	Group 10	Group 11	Group 12	Group 13	Group 14
	France preferred: User Group C (option 1)	France preferred: User Group C (option 2)	European TV channel 21 optimized 470 - 478 MHz	European TV channel 22 optimized 478 - 486 MHz	European TV channel 23 optimized 486 - 494 MHz	Compatible with Group 13 of SLX G5E (extended group)	Compatible with Group 14 of SLX G5E (extended group)
1	471.000	470.300	470.200	478.200	486.200	471.125	471.550
2	472.225	472.975	471.800	479.800	487.800	472.375	473.425
3	474.025	474.775	472.900	480.900	488.900	474.425	476.925
4	476.700	477.500	474.475	482.475	490.475	476.950	479.725
5	478.300	482.775	476.375	484.375	492.375	479.125	481.750
6	480.225	485.900	477.500	485.500	493.500	480.650	485.075
7	485.900	487.000				486.200	487.600
8	490.025	490.025				489.250	489.375
9	492.000	492.000				491.150	490.750
10	493.100	493.500				493.575	492.850

G5E (494-518 MHz)

Channel	Group 1	Group 2	Group 3	Group 4	Group 5	Group 6	Group 7
	Full Range max. # of compatible frequencies (option 1)	Full Range max. # of compatible frequencies (option 2)	Full Range max. # of compatible frequencies (option 3)	France preferred: User Group A (option 1)	France preferred: User Group A (option 2)	France preferred: User Group B (option 1)	France preferred: User Group B (option 2)
1	494.750	494.125	494.250	495.250	495.750	494.500	496.025
2	495.900	495.300	495.375	496.500	497.750	496.775	498.975
3	497.550	497.250	496.875	498.500	499.250	498.225	501.300
4	498.850	498.500	498.950	502.750	504.500	500.900	504.025
5	501.350	501.100	500.475	507.750	508.250	505.500	505.500
6	502.575	503.250	503.300	510.750	510.750	508.500	510.100
7	504.550	504.400	504.850	514.500	513.750	510.500	512.775
8	507.200	506.000	507.325	516.250	515.500	512.025	514.225
9	508.375	508.400	508.600			514.975	516.500
10	510.825	509.900	510.175			517.300	517.700
11	512.550	511.975	512.050				
12	513.650	514.350	513.475				
13	516.125	516.075	516.275				
14	517.400	517.375	517.425				

G5E (494-518 MHz) Continuation

Channel	Group 8	Group 9	Group 10	Group 11	Group 12	Group 13	Group 14
	France preferred: User Group C (option 1)	France preferred: User Group C (option 2)	European TV channel 24 optimized 494 - 502 MHz	European TV channel 25 optimized 502 - 510 MHz	European TV channel 26 optimized 510 - 518 MHz	Compatible with Group 13 of SLX G4E (extended group)	Compatible with Group 14 of SLX G4E (extended group)
1	495.000	494.300	494.200	502.200	510.200	496.450	495.875
2	496.225	496.975	495.800	503.800	511.800	498.650	501.450
3	498.025	500.700	496.900	504.900	512.900	502.050	502.975
4	500.700	501.900	498.475	506.475	514.475	504.400	504.900
5	502.300	506.025	500.375	508.375	516.375	505.775	507.650
6	504.225	508.000	501.500	509.500	517.500	508.600	509.125
7	509.900	509.100				511.850	511.475
8	514.025	512.975				513.350	512.725
9	516.000	514.775				515.625	514.450
10	517.100	516.000				517.250	515.650

K3E (606–630 MHz)

Channel	Group 1	Group 2	Group 3	Group 4	Group 5	Group 6	Group 7	Group 8
	Full Range max. # of compatible frequencies (option 1)	Full Range max. # of compatible frequencies (option 2)	Full Range max. # of compatible frequencies (option 3)	Full Range max. # of compatible frequencies, Ch. 38 excl. (option 1)	Full Range max. # of compatible frequencies, Ch. 38 excl. (option 2)	U.K. preferred: TV ch. 38 606-614 MHz with 500 kHz guard band (option 1)	U.K. preferred: TV ch. 38 606-614 MHz with 500 kHz guard band (option 2)	U.K. preferred: TV ch. 38 606-614 MHz with 500 kHz guard band (option 3)
1	606.750	606.125	606.250	614.550	614.850	606.525	606.575	606.625
2	607.900	607.300	607.375	615.750	616.050	607.650	607.825	607.800
3	609.550	609.250	608.875	617.550	617.575	609.075	609.675	609.700
4	610.850	610.500	610.950	618.850	619.500	610.875	610.800	610.850
5	613.350	613.100	612.475	621.025	620.750	611.975	612.350	612.300
6	614.575	615.250	615.300	622.650	622.550	613.475	613.450	613.400
7	616.550	616.400	616.850	623.775	624.950			
8	619.200	618.000	619.325	625.675	626.325			
9	620.375	620.400	620.600	626.825	628.050			
10	622.825	621.900	622.175	628.325	629.450			
11	624.550	623.975	624.050					
12	625.650	626.350	625.475					
13	628.125	628.075	628.275					
14	629.400	629.375	629.425					

Channel	Group 9	Group 10	Group 11	Group 12	Group 13	Group 14	Group 15	Group 16
	U.K. preferred: TV ch. 38 606-614 MHz with 125 kHz guard band (option 1)	U.K. preferred: TV ch. 38 606-614 MHz with 125 kHz guard band (option 2)	U.K. preferred: TV ch. 38 606-614 MHz with 125 kHz guard band (option 3)	France preferred: User Group A 614 - 630 MHz	France preferred: User Group B 614 - 630 MHz	France preferred: User Group C 614 - 630 MHz	European TV channel 39 optimized 614 - 622 MHz	European TV channel 40 optimized 622 - 630 MHz
1	606.200	606.350	606.675	615.250	616.775	615.000	614.200	622.200
2	607.800	607.650	607.775	616.500	618.225	616.225	615.800	623.800
3	608.900	609.750	609.175	619.750	620.500	618.775	616.900	624.900
4	610.475	610.850	610.875	623.500	621.700	620.700	618.475	626.475
5	612.375	612.425	612.050	626.500	625.500	621.900	620.375	628.375
6	613.500	613.700	613.575	628.250	626.975	626.025	621.500	629.500
7					628.900	628.000		
8						629.100		

L4E (638 - 662 MHz)

Channel	Group 1	Group 2	Group 3	Group 4	Group 5	Group 6	Group 7	Group 8	Group 9
	Full Range even distribution for each US TV-channel (option 1)	Full Range even distribution for each US TV-channel (option 2)	Full Range max. # of frequencies for US TV-ch 42 (option 1)	Full Range max. # of frequencies for US TV-ch 43 (option 1)	Full Range max. # of frequencies for US TV-ch 44 (option 1)	Full Range max. # of frequencies for US TV-ch 45 (option 1)	Full Range max. # of compatible frequencies (option 1)	Full Range max. # of compatible frequencies (option 2)	Full Range max. # of compatible frequencies (option 3)
1	638.400	639.250	638.200	639.775	639.100	638.425	638.250	638.750	638.125
2	641.500	640.500	639.675	642.500	641.225	640.400	639.375	639.900	639.300
3	643.575	642.225	640.800	644.200	642.550	643.425	640.875	641.550	641.250
4	645.050	644.725	642.450	645.600	644.575	645.475	642.950	642.850	642.500
5	647.425	646.350	643.750	646.700	646.900	647.775	644.475	645.350	645.100
6	649.200	647.550	646.200	648.250	650.500	651.675	647.300	646.575	647.250
7	652.450	650.800	648.325	649.500	651.750	653.800	648.850	648.550	648.400
8	653.650	652.575	652.225	653.100	653.300	656.250	651.325	651.200	650.000
9	655.275	654.950	654.525	655.425	654.400	657.550	652.600	652.375	652.400
10	657.775	656.425	656.575	657.450	655.800	659.200	654.175	654.825	653.900
11	659.500	658.500	659.600	658.775	657.500	660.325	656.050	656.550	655.975
12	660.750	661.600	661.575	660.900	660.225	661.800	657.475	657.650	658.350
13							660.275	660.125	660.075
14							661.425	661.400	661.375

Channel	Group 10	Group 11	Group 12	Group 13	Group 14	Group 15	Group 16	Group 17	Group 18
	France preferred: User Group A (option 1)	France preferred: User Group A (option 2)	France preferred: User Group B (option 1)	France preferred: User Group B (option 2)	France preferred: User Group C (option 1)	France preferred: User Group C (option 2)	European TV channel 42 optimized 638 - 646 MHz	European TV channel 43 optimized 646 - 654 MHz	European TV channel 44 optimized 654 - 662 MHz
1	639.250	639.500	638.500	640.025	639.000	638.300	638.200	646.200	654.200
2	640.500	641.250	640.775	642.975	640.225	640.975	639.800	647.800	655.800
3	642.500	643.750	642.225	645.300	642.025	644.700	640.900	648.900	656.900
4	646.750	646.750	644.900	648.025	644.700	645.900	642.475	650.475	658.475
5	651.750	651.500	649.500	649.500	646.300	650.025	644.375	652.375	660.375
6	654.750	655.250	652.500	654.100	648.225	652.000	645.500	653.500	661.500
7	658.500	658.500	654.500	656.775	653.900	653.100			
8	660.250	659.750	656.025	658.225	658.025	656.975			
9			658.975	660.500	660.000	658.775			
10			661.300	661.700	661.100	660.000			

Q24 (736-754 MHz)

Channel	Group 1	Group 2	Group 3	Group 4	Group 5	Group 6	Group 7	Group 8	Group 9	Group 10	Group 11	Group 12	Group 13
	Full Range max. # of compatible frequencies (option 1)	Full Range max. # of compatible frequencies (option 2)	Full Range max. # of compatible frequencies (option 3)	European TV channel 54 optimized 736 - 742 MHz	European TV channel 55 optimized 742 - 750 MHz	European TV channel 56 optimized 750 - 754 MHz	European TV channels 54 and 56 optimized 736 - 742 MHz 750 - 754 MHz	France preferred: User Group A (option 1)	France preferred: User Group B (option 1)	France preferred: User Group C (option 1)	France preferred: User Group A (option 2)	France preferred: User Group B (option 2)	France preferred: User Group C (option 2)
1	736.475	736.550	736.300	736.250	742.125	750.150	736.175	737.250	736.775	736.225	737.750	736.775	736.225
2	738.225	738.075	737.575	737.975	743.225	751.250	737.700	739.500	738.975	738.775	740.250	738.225	738.025
3	739.325	739.200	739.200	739.200	744.925	752.700	738.800	742.750	740.500	740.700	743.750	740.900	741.100
4	740.775	740.900	740.325	740.725	746.225	753.825	740.425	744.500	741.700	743.000	746.500	742.100	742.300
5	742.575	742.150	741.775	741.825	748.025		741.725	747.250	745.500	744.225	748.250	745.500	748.000
6	744.075	744.150	744.775		749.525		750.125	750.750	748.500	746.025	751.500	748.500	749.100
7	746.250	745.725	746.850				751.275	753.250	750.100	750.300	753.750	752.025	751.000
8	747.925	747.000	748.200				752.725		752.775	752.975		753.500	752.225
9	749.175	748.750	749.975				753.850						
10	751.050	750.875	751.125										
11	752.575	752.550	752.625										
12	753.800	753.850	753.725										

R19 (794 - 806 MHz)

Channel	Group 1	Group 2	Group 3	Group 4
1	795.150	794.375	794.100	794.900
2	796.850	795.600	795.300	796.100
3	798.100	797.425	797.200	798.000
4	800.750	799.725	798.550	799.350
5	802.200	803.025	800.625	801.425
6	805.350	804.475	802.150	802.950
7			803.350	804.150
8			804.925	805.725
	Full Range	Full Range	Full Range	Full Range

X4 (925-932 MHz)

Channel	Group 1	Group 2	Group 3	Group 4	Group 5	Group 6
	Full range, Robust, 5 channels	Full range, Robust, 5 channels	Full range, Robust, 5 channels	Full range, Max frequencies, 6 channels	Full range, Max frequencies, 6 channels	Full range, Max frequencies, 6 channels
	925.275	925.350	925.175	925.150	925.125	925.175
2	926.900	927.050	926.575	926.250	926.225	926.275
3	928.100	928.325	928.525	928.075	927.700	927.750
4	929.925	930.225	929.725	929.200	928.825	928.875
5	931.325	931.700	931.475	930.700	930.575	930.650
6				931.850	931.750	931.800

S10 (823-832 MHz)

Channel	Group 1	Group 2	Group 3	Group 4	Group 5	Group 6	Group 7	Group 8	Group 9
1	827.550	827.175	828.050	827.875	828.475	826.850	827.250	827.275	827.700
2	828.700	828.800	826.350	826.225	827.375	828.100	828.475	828.500	826.475
3	826.025	826.050	829.225	828.975	825.850	825.000	825.600	825.625	829.350
4			830.750	824.075	830.175	829.750	829.975	830.000	824.975
5			824.025	830.975	823.575	830.850	824.225	824.250	830.725
6					831.450	823.600	831.775	831.825	831.825
7							823.125	823.150	823.125

PERU DECLARATION OF CONFORMITY

Shure Incorporated
5800 W. Touhy Avenue
Niles, Illinois 60714-4608, U.S.A.
(847) 600-2000

Shure Incorporated declares that the following product

Model: SLX1-H5 (518-542MHz) SLX1-J3 (572-596MHz) SLX1-L4 (638-662MHz)

Description: UHF FM Wireless Microphone Transmitter

Has been tested and found to comply with the limits set in Peru wireless regulatory standard **RM N ° 204-2009-MTC/03**. It's effective radiated power (ERP) has been measured to be less than 10 mW, as measured in accordance with ETSI standard EN 300 422.

Signed  Date: August 24, 2009
Name, Title: Kevin Marrs, Manager, Global Compliance, Shure Incorporated

PERU DECLARATION OF CONFORMITY


Shure Incorporated
5800 W. Touhy Avenue
Niles, Illinois 60714-4608, U.S.A.
(847) 600-2000

Shure Incorporated declares that the following product

Model: SLX2-H5 (518-542MHz) SLX2-J3 (572-596MHz) SLX2-L4 (638-662MHz)

Description: UHF FM Wireless Microphone Transmitter

Has been tested and found to comply with the limits set in Peru wireless regulatory standard **RM N ° 204-2009-MTC/03**. It's effective radiated power (ERP) has been measured to be less than 10 mW, as measured in accordance with ETSI standard EN 300 422.

Signed  Date: August 24, 2009
Name, Title: Kevin Marrs, Manager, Global Compliance, Shure Incorporated



**United States, Canada, Latin
America, Caribbean:**

Shure Incorporated
5800 West Touhy Avenue
Niles, IL 60714-4608 USA

Phone: +1-847-600-2000
Fax: +1-847-600-1212 (USA)
Fax: +1-847-600-6446
Email: info@shure.com

Europe, Middle East, Africa:

Shure Europe GmbH
Jakob-Dieffenbacher-Str. 12,
75031 Eppingen, Germany

Phone: +49-7262-92490
Fax: +49-7262-9249114
Email: info@shure.de

Asia, Pacific:

Shure Asia Limited
22/F, 625 King's Road
North Point, Island East
Hong Kong

Phone: 852-2893-4290
Fax: 852-2893-4055
Email: info@shure.com.hk

www.shure.com

©2012 Shure Incorporated