



# Digital Mixer Amplifier

## A-3600D Series



The industry leader in background music future-proofed

## OVERVIEW

A-3600D Series Digital Mixer Amplifier provides maximum flexibility with up to seven inputs and up to 480 W of power. Browser based control and monitoring from anywhere reduces your time troubleshooting and adjusting systems.

Feedback suppressor, input priorities, a sleek new appearance, and TOA's legendary quality and reliability make this a perfect fit for background and foreground music, paging, and noise masking applications.

## KEY FEATURES

- » 4 selection of power amplifier output
  - 60W (A-3606D), 120W (A-3612D), 240W (A-3624D), 480W (A-3648D)
- » TOA class D amplifiers for maximum efficiency
- » Feedback Suppressor (Dynamic feedback filters)
- » Speaker EQ (3 points equalizer)
- » Assignable input priorities
- » Built-in pre-announce chime
- » IP protocol available

## WEB BROWSER INTERFACE

Connect the A-3600D Digital Mixer Amplifier to a network to access the onboard browser interface. Static or Dynamic Host Configuration Protocol address assignment may be used. Browser Interface allows access to:

- » Account ID (Username and Password) settings
- » System status, including real time display of input and output levels
- » Input priority settings
- » Speaker EQ settings (3 points equalizer)
- » Firmware updates



### System requirements

PC running Windows 10 (64-bit)

Supported browsers: Microsoft Edge™\*, Google Chrome™\*, and Mozilla Firefox™\*

Notes:

- Microsoft Windows, and Microsoft Edge are registered trademarks of Microsoft Corporation.
- Google Chrome is a registered trademark of Google LLC.
- Mozilla and Firefox are registered trademarks of the Mozilla Foundation.

# KEY BENEFITS

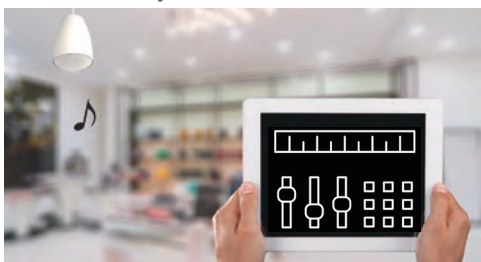
## 1. Remote Troubleshooting

A web browser interface allows you to view input and output levels and amplifier status from your office location. A quick check can verify the need to dispatch a technician.

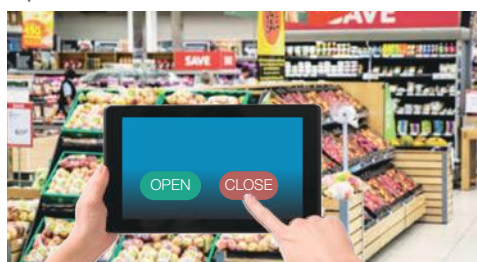
## 2. Remote Control

You can adjust the speaker volume either by the physical controls on the front panel of amplifier, by the optional remote volume controller, or on web browser. IP control protocol is also available for further integrations and developments.

>> Volume adjustment on site\*



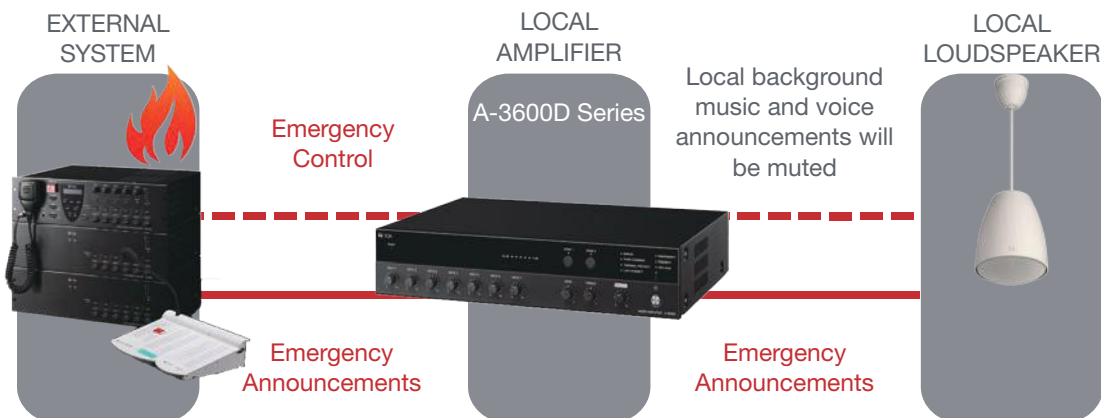
>> Open/close the store at a touch\*



\* IP protocols are available to develop combined user interface including sound system, air conditioning system, and lighting system.

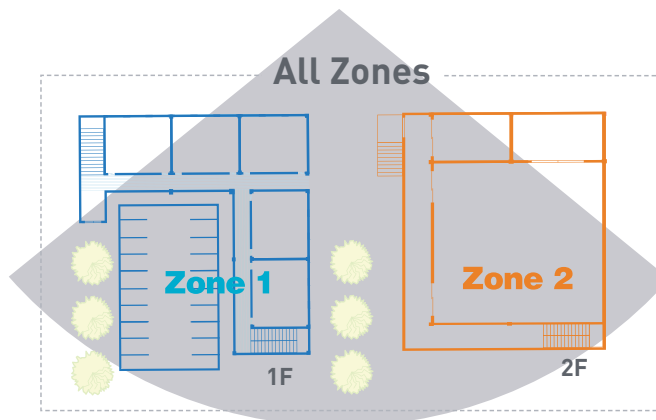
## 3. Emergency Voice Announcement

Integrate an external system to mute or override local sound. When the unit is set to override local sound, the broadcast is made at maximum level, regardless of output volume settings.



## 4. Two Zone Coverage

A-3600D Series Digital Mixer Amplifiers feature two speaker zones to which broadcasts can be sent independently or combined as desired. Emergency broadcasts will be heard in both zones.



■DESCRIPTION

TOA's A-3600D Series is a PA amplifier equipped with 4 microphone inputs and 3 auxiliary inputs, and 2-channel zone selector. It employs a PFC circuit. It also features the following functions: Volume control function, Priority function, Chime function, and Remote confirmation function. In addition, it is equipped with a 2-channel input BUS of BUS 1 and BUS 2, and the signal processing function. The A-3600D Series mixer amplifier is ideal for paging announcement and BGM applications in schools, offices, and super markets.

■SPECIFICATIONS

Power Source	100 – 240 V AC, 50/60 Hz
Rated Output	480 W
Power/Current Consumption	601 W (rated output), 113 W (based on EN62368), 200 mA or less (when power switch is OFF)
Frequency Response	50 Hz – 20 kHz ±3 dB (1/8 rated output)
Distortion	1 % or less at 1 kHz, rated power (20 kHz LPF (AUX-0025))
Tone Control	Bass: ±10 dB at 100 Hz Treble: ±10 dB at 10 kHz
Signal to Noise Ratio	88 dB or more (Master volume: min) 76 dB or more (Master volume: max) 55 dB or more (INPUT 1 – 6) 72 dB or more (INPUT 7) (A-weighted)
Audio Input	INPUT 1, 2: -60 dB (*1) (MIC)/-20 dB (*1) (LINE) selectable, 600 Ω, electronically-balanced, removable terminal block (3 pins) Note: MIC inputs are equipped with phantom power (24 V DC, ON/OFF switchable). INPUT 3, 4: -60 dB (*1), 600 Ω, electronically-balanced, removable terminal block (3 pins) Note: Equipped with phantom power (24 V DC, ON/OFF switchable). INPUT 5, 6: MIC (BUS 1)/LINE (BUS 2) selectable MIC: -60 dB (*1), 600 Ω, electronically-balanced, removable terminal block (3 pins) LINE: -20 dB (*1), 10 kΩ, unbalanced, RCA pin jack × 2 INPUT 7: -20 dB (*1), 10 kΩ, unbalanced, RCA pin jack × 2 PWR AMP IN: 0 dB (*1), 600 Ω, unbalanced, RCA pin jack
Input Bus	INPUT 1 – 4 : BUS 1 INPUT 5, 6 : BUS 1/BUS 2 selectable INPUT 7 : BUS 2
Audio Output	SPEAKER OUT: Low impedance (4 – 16 Ω)/ High impedance (DIRECT, ZONE 1/ZONE 2: 100 V/total 21 Ω), removable terminal block (6 pins) (ZONE 1/ZONE 2 is selectable, Max. 480 W per output) REC OUT: 0 dB (*1), 600 Ω, unbalanced, RCA pin jack LINE OUT 1, 2: 0 dB (*1), 600 Ω, unbalanced, RCA pin jack, (Interlock with zone selection is possible)
Control Input	4 channels, no-voltage make contact input, open voltage: 35 V DC or less, short-circuit current: 10 mA or less, removable terminal block (4 pins) REMOTE VOLUME: Removable terminal block (4 pins) ZONE CONTROL IN: No-voltage make contact input, open voltage: 35 V DC or less, short-circuit current: 10 mA or less, removable terminal block (4 pins)
Control Output	POWER REMOTE OUT: Open collector output, withstand voltage: 30 V DC or less, control current: 25 mA or less, removable terminal block (4 pins) EMERGENCY OUT: Open collector output, withstand voltage: 30 V DC or less, control current: 25 mA or less, removable terminal block (4 pins) ZONE CONTROL OUT: Open collector output, withstand voltage: 30 V DC or less, control current: 25 mA or less, removable terminal block (4 pins)
Chime	1-note, 2-note, or ascending 4-note chime, or None selectable with switch setting
Indicators	5-point LED output level meter, Power indicator LED, LAN Connect indicator LED, Priority indicator LED, Emergency indicator LED, Thermal protection indicator LED, Over current protection indicator LED, CPU RUN indicator LED, Error indicator LED, Zone 1 indicator LED, Zone 2 indicator LED
Operating Temperature	-10 °C to +40 °C (14 °F to 104 °F)
Operating Humidity	85 %RH or less (no condensation)
Finish	Panel: ABS resin, black Case: Surface-treated steel plate, black, paint
Dimensions	420 (W) × 96.1 (H) × 313.1 (D) mm (16.54" × 3.78" × 12.33")
Weight	5.2 kg (11.46 lb)

### SPECIFICATIONS

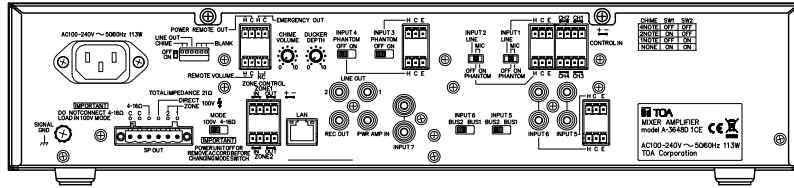
Accessory	Power cord (2 m (6.56 ft)) ---1, Audio input removable terminal plug (3.81 mm, 3 pins) ---6, Control I/O removable terminal plug (3.81 mm, 4 pins) ---4, Remote control removable terminal plug (3.5 mm, 4 pins) ---2, Speaker out removable terminal plug (5 mm, 6 pins) ---1, Volume control cover ---4
Option	Rack mounting bracket: MB-25B Perforated panel : PF-013B

(\*1) 0 dB = 1 V

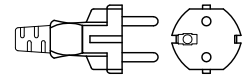
### APPEARANCE

#### Rear View

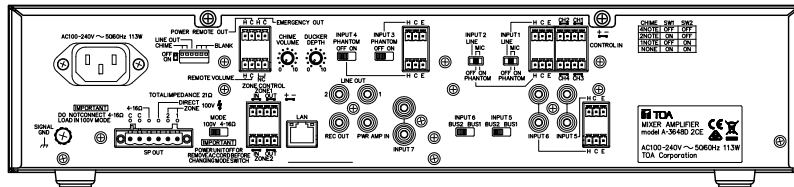
1CE model



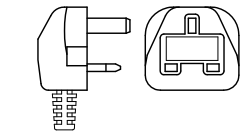
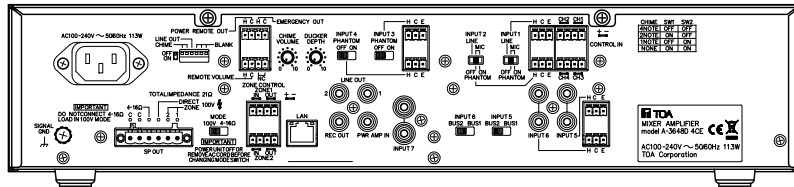
AC plug



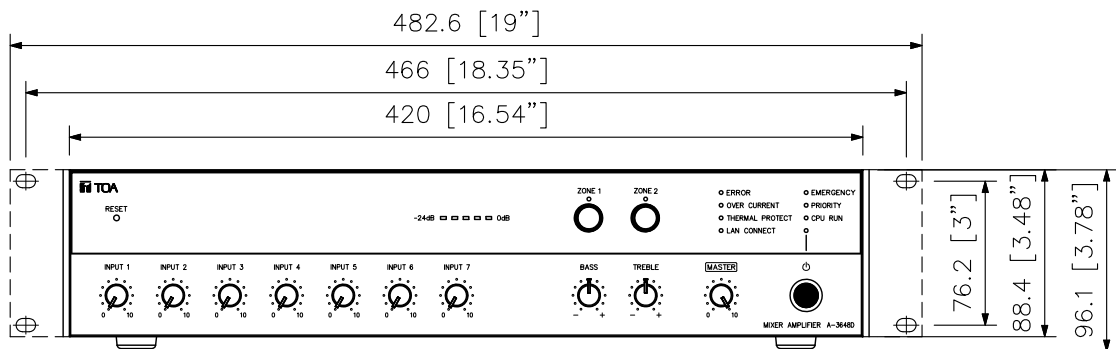
2CE model



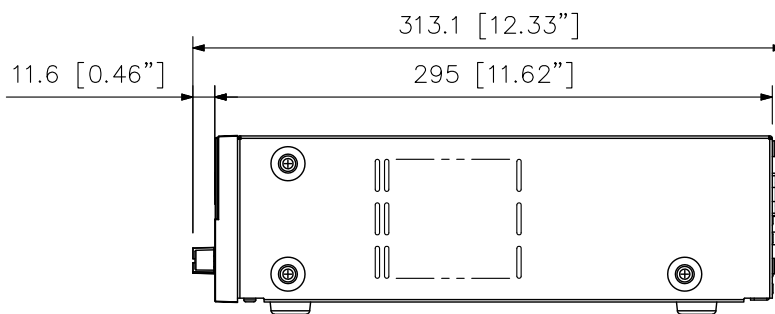
4CE model



#### Front View



#### Side View



UNIT: mm SCALE: 1/4